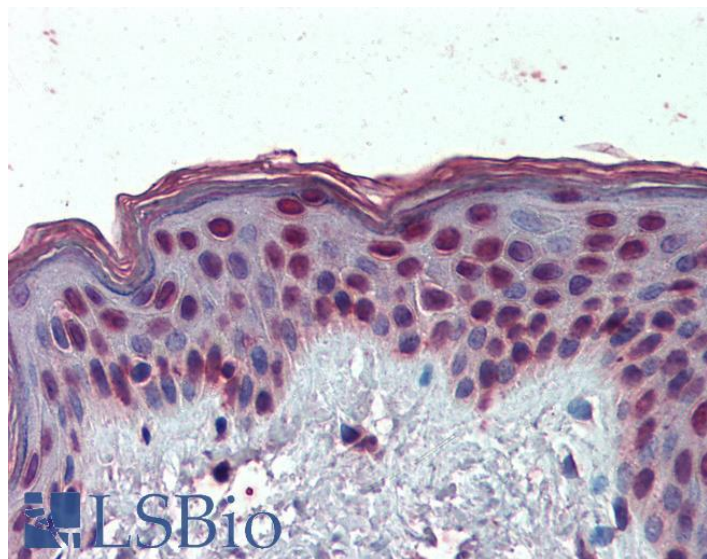


GOAT ANTI-HMGA1 (AA9-21) ANTIBODY

SKU: EB09567



SPECIFICATIONS

Formulation	Supplied at 0.5 mg/ml in Tris saline, 0.02% sodium azide, pH7.3 with 0.5% bovine serum albumin.
Unit Size	100 µg
Storage	Aliquot and store at -20°C. Minimize freezing and thawing.
Instructions	
Synonym / Alias	nonhistone chromosomal high-mobility group protein HMG-I/HMG-Y high-mobility group (nonhistone chromosomal) protein isoforms I and Y OTTHUMP00000039618 OTTHUMP00000016224 OTTHUMP00000016223 OTTHUMP00000016222 MGC4854 MGC4242 MGC12816 HMGY HMGA1A HMG-R high mobility group AT-hook 1 HMGA1
Names	
Accession ID	NP_665906.1; NP_002122.1
Blocking Peptide	EBP09567
Immunogen	Peptide with sequence C-SQPLASKQEKDGT, from the internal region (near N Terminus) of the protein sequence according to NP_665906.1; NP_002122.1.
Product	This antibody is expected to recognize reported isoforms a (NP_665906.1, NP_665908.1, NP_665911.1) and b (NP_002122.1, NP_665910.1, NP_665912.1). This
Comments	antibody is not expected to cross-react with HMGA2.
Peptide Sequence	C-SQPLASKQEKDGT
Purification Method	Purified from goat serum by ammonium sulphate precipitation followed by antigen affinity chromatography using the immunizing peptide.
Shipping Instructions	Refrigerated
Predicted Species	Human, Mouse, Rat, Dog, Cow, Pig
Reactive Species	Human
Human Gene ID	3159

Mouse Gene ID	15361
Rat Gene ID	117062
Product Grade	https://prod-vector-labs-pimcore-assets.s3.us-east-1.amazonaws.com/assets/products/image/elite_medium.png
IHC Results	Paraffin embedded Human Skin and Placenta. Recommended concentration: 3.75µg/ml.
ELISA Detection Limit	Antibody detection limit dilution 1:16000.
Western Blot	Approx 24kDa band observed in Human Pancreas (calculated MW of 11.7kDa/10.7kDa according to NP_665906.1; NP_002122.1). This molecular weight is routinely observed by other sources. This band was successfully blocked by incubation with the immunizing peptide. Recommended concentration: 0.5-1µg/ml. Primary incubation was 1 hour.
Application Type	Pep-ELISA, WB, IHC

DOCUMENTS

- [Data Sheet](#)

GALLERY IMAGES

