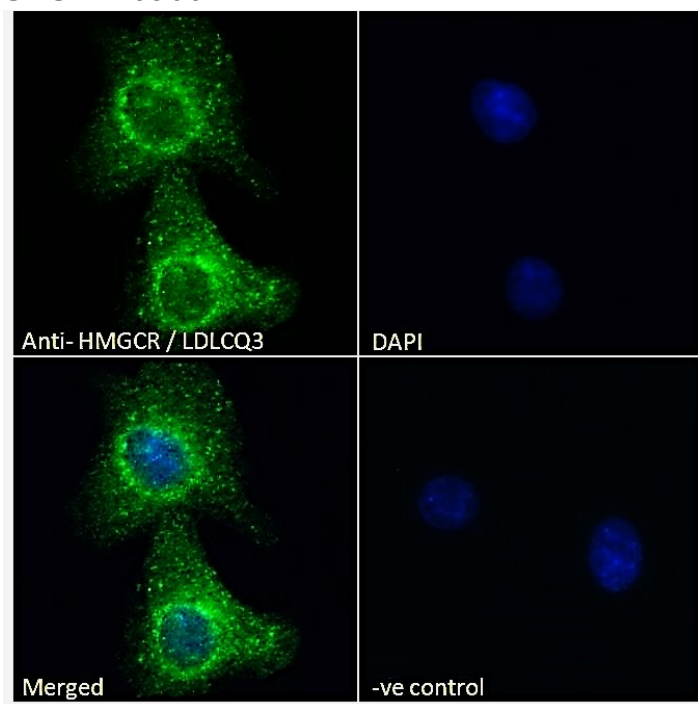


GOAT ANTI-HMGCR / LDLCQ3 ANTIBODY

SKU: EB09007



SPECIFICATIONS

Formulation Supplied at 0.5 mg/ml in Tris saline, 0.02% sodium azide, pH7.3 with 0.5% bovine serum albumin.

Unit Size 100 µg

Storage Instructions Aliquot and store at -20°C. Minimize freezing and thawing.

Synonym / Alias Names HMG-CoA reductase|hydroxymethylglutaryl-CoA reductase|3-hydroxy-3-methylglutaryl CoA reductase (NADPH)|LDLCQ3|3-hydroxy-3-methylglutaryl-Coenzyme A reductase|HMGCR

Usage Summary **Immunofluorescence:** Strong expression of the protein seen in the endoplasmic reticulum and vesicles of A549 cells. Recommended concentration: 10µg/ml. **Flow Cytometry:** Flow cytometric analysis of A549 cells. Recommended concentration: 10ug/ml.

Accession ID NP_000850.1; NP_001124468.1

Blocking Peptide EBP09007

Immunogen	Peptide with sequence C-ADPSPQNSTADTSK , from the internal region of the protein sequence according to NP_000850.1; NP_001124468.1.
Peptide Sequence	C-ADPSPQNSTADTSK
Purification Method	Purified from goat serum by ammonium sulphate precipitation followed by antigen affinity chromatography using the immunizing peptide.
Shipping Instructions	Refrigerated
Predicted Species	Human
Reactive Species	Human
Human Gene ID	3156
Product Grade	https://prod-vector-labs-pimcore-assets.s3.us-east-1.amazonaws.com/assets/products/image/elite_medium.png
ELISA Detection Limit	Antibody detection limit dilution 1:8000.
Application Type	Pep-ELISA, IF, FC

DOCUMENTS

- [Data Sheet](#)

GALLERY IMAGES

