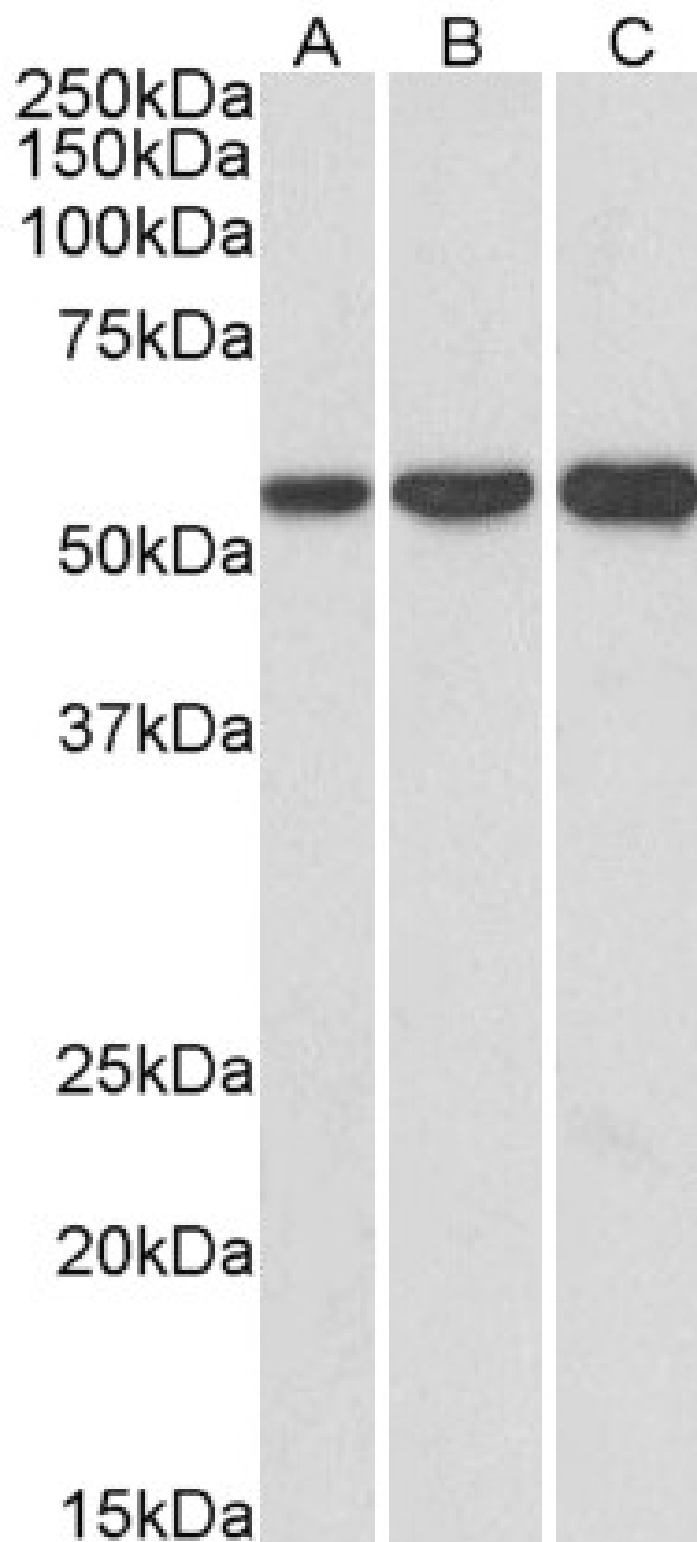


GOAT ANTI-HMGCS1 (AA321-332) ANTIBODY

SKU: EB12868



SPECIFICATIONS

Formulation	Supplied at 0.5 mg/ml in Tris saline, 0.02% sodium azide, pH7.3 with 0.5% bovine serum albumin.
Unit Size	100 µg
Storage	Aliquot and store at -20°C. Minimize freezing and thawing.
Instructions	
Synonym / Alias	HMGCs1[3-hydroxy-3-methylglutaryl-CoA synthase 1 (soluble)]HMGCs[3-hydroxy-3-methylglutaryl coenzyme A (HMG-CoA) synthase[3-hydroxy-3-methylglutaryl-Coenzyme A synthase 1 (soluble)]hydroxymethylglutaryl-CoA
Names	synthase, cytoplasmic
Accession ID	NP_002121.4
Blocking Peptide	EBP12868
Immunogen	Peptide with sequence C-KASSELFQKTK, from the internal region of the protein sequence according to NP_002121.4.
Product Comments	Reported variants represent identical protein: NP_002121.4, NP_001091742.1.
Peptide Sequence	C-KASSELFQKTK
Purification Method	Purified from goat serum by ammonium sulphate precipitation followed by antigen affinity chromatography using the immunizing peptide.
Shipping Instructions	Refrigerated
Predicted Species	Human
Reactive Species	Human
Human Gene ID	3157
Product Grade	https://prod-vector-labs-pimcore-assets.s3.us-east-1.amazonaws.com/assets/products/image/elite_medium.png
ELISA Detection Limit	Antibody detection limit dilution 1:128000.
Western Blot	Approx 57kDa band observed in lysates of cell lines HeLa, HepG2, and K562 (calculated MW of 57.3kDa according to NP_002121.4). Recommended concentration: 1-3µg/ml.
Application Type	Pep-ELISA, WB

DOCUMENTS

- [Data Sheet](#)

GALLERY IMAGES

