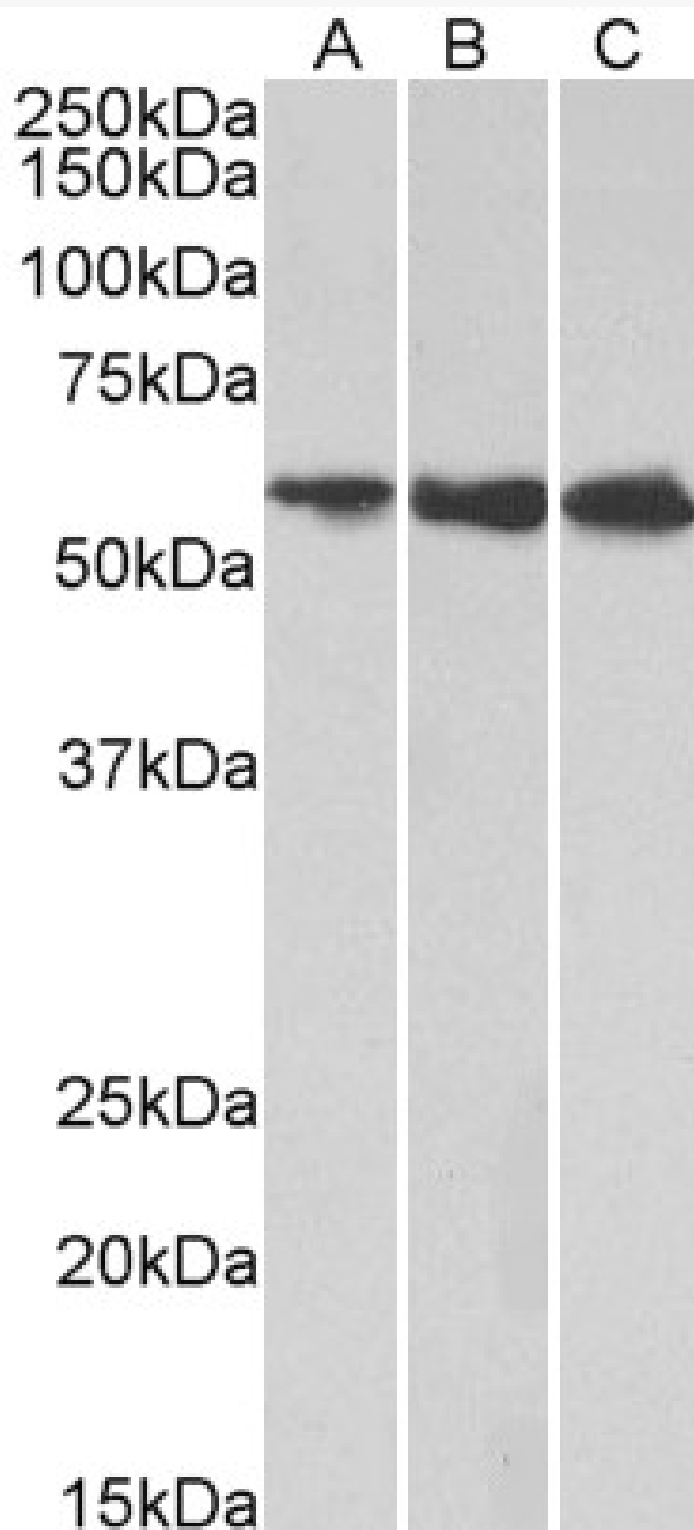


GOAT ANTI-HMGCS1 ANTIBODY

SKU: EB12867



SPECIFICATIONS

| | |
|------------------------------|--------------------------------------------------------------------------------------------------------------------------------------------------------------------------------------------------------------------------------------|
| Formulation | Supplied at 0.5 mg/ml in Tris saline, 0.02% sodium azide, pH7.3 with 0.5% bovine serum albumin. |
| Unit Size | 100 µg |
| Storage | Aliquot and store at -20°C. Minimize freezing and thawing. |
| Instructions | |
| Synonym / Alias | HMGCs1 3-hydroxy-3-methylglutaryl-CoA synthase 1 (soluble) HMGCs 3-hydroxy-3-methylglutaryl coenzyme A (HMG-CoA) synthase 3-hydroxy-3-methylglutaryl-Coenzyme A synthase 1 (soluble) hydroxymethylglutaryl-CoA synthase, cytoplasmic |
| Names | |
| Accession ID | NP_002121.4 |
| Blocking Peptide | EBP12867 |
| Immunogen | Peptide with sequence ERNNLSYDCIGRLE, from the internal region of the protein sequence according to NP_002121.4. |
| Product Comments | Reported variants represent identical protein: NP_002121.4, NP_001091742.1. |
| Peptide Sequence | ERNNLSYDCIGRLE |
| Purification Method | Purified from goat serum by ammonium sulphate precipitation followed by antigen affinity chromatography using the immunizing peptide. |
| Shipping Instructions | Refrigerated |
| Predicted Species | Human |
| Reactive Species | Human |
| Human Gene ID | 3157 |
| Product Grade | https://prod-vector-labs-pimcore-assets.s3.us-east-1.amazonaws.com/assets/products/image/elite_medium.png |
| ELISA | |
| Detection Limit | Antibody detection limit dilution 1:128000. |
| Western Blot | Approx 57kDa band observed in lysates of cell lines HeLa, HepG2, and K562 (calculated MW of 57.3kDa according to NP_002121.4). Recommended concentration: 1-3µg/ml. |
| Application Type | Pep-ELISA, WB |

DOCUMENTS

- [Data Sheet](#)

GALLERY IMAGES

