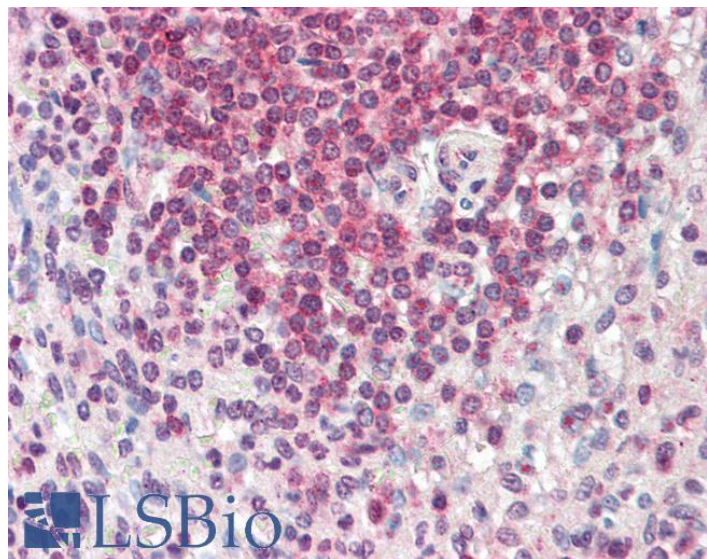


# GOAT ANTI-HMHA1 (AA57-71) ANTIBODY

**SKU:** EB11350



## SPECIFICATIONS

**Formulation** Supplied at 0.5 mg/ml in Tris saline, 0.02% sodium azide, pH7.3 with 0.5% bovine serum albumin.

**Unit Size** 100 µg

**Storage Instructions** Aliquot and store at -20°C. Minimize freezing and thawing.

**Synonym / Alias Names** HMHA1| minor histocompatibility protein HA-1| minor histocompatibility antigen HA-1| KIAA0223| HLA-HA1| histocompatibility (minor) HA-1| HA-1

**Accession ID** NP\_036424.2

**Blocking Peptide** EBP11350

**Immunogen** Peptide with sequence KATGTLKRPTSLSRH-C, from the N Terminus of the protein sequence according to NP\_036424.2.

**Product Comments** To avoid confusion please note that this antibody is designed to recognise the whole protein as coded by NP\_036424.2 and won't recognise the peptide found eluted from HLA-A\*0201 molecules by den Haan et al (Science. 1998 Feb 13;279(5353):1054-7, PMID: 9461441)

**Peptide Sequence** KATGTLKRPTSLSRH-C

<b>Purification Method</b>	Purified from goat serum by ammonium sulphate precipitation followed by antigen affinity chromatography using the immunizing peptide.
<b>Shipping Instructions</b>	Refrigerated
<b>Predicted Species</b>	Human, Mouse, Rat, Cow
<b>Reactive Species</b>	Human
<b>Human Gene ID</b>	23526
<b>Mouse Gene ID</b>	70719
<b>Rat Gene ID</b>	314618
<b>Product Grade</b>	<a href="https://prod-vector-labs-pimcore-assets.s3.us-east-1.amazonaws.com/assets/products/image/elite_medium.png">https://prod-vector-labs-pimcore-assets.s3.us-east-1.amazonaws.com/assets/products/image/elite_medium.png</a>
<b>IHC Results</b>	Paraffin embedded Human Spleen. Recommended concentration: 5µg/ml.
<b>ELISA</b>	
<b>Detection Limit</b>	Antibody detection limit dilution 1:128000.
<b>Application Type</b>	Pep-ELISA, IHC

## DOCUMENTS

- [Data Sheet](#)

## GALLERY IMAGES

