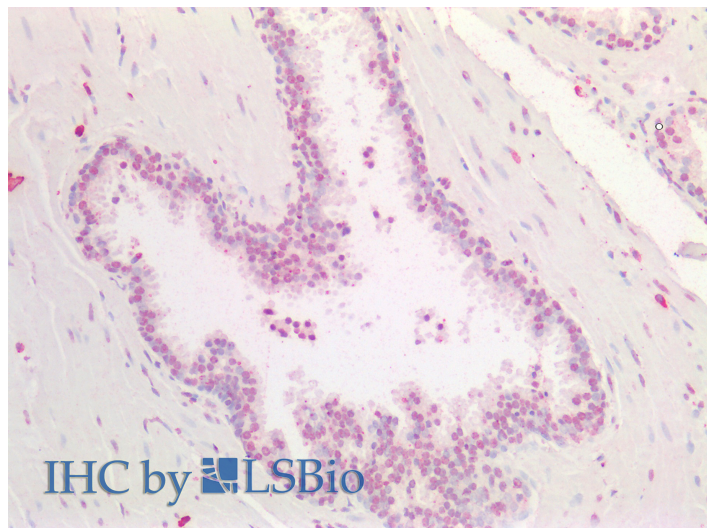




GOAT ANTI-HOXA5 (AA157-168) ANTIBODY

SKU: EB12200



SPECIFICATIONS

Formulation Supplied at 0.5 mg/ml in Tris saline, 0.02% sodium azide, pH7.3 with 0.5% bovine serum albumin.

Unit Size 100 µg

Storage Instructions Aliquot and store at -20°C. Minimize freezing and thawing.

Synonym / Alias Names homeobox protein Hox-A5|homeobox protein Hox-1C|homeobox protein HOXA5|homeo box A5|homeo box 1C|HOX1C|HOX1.3|HOX1|homeobox A5|HOXA5

Accession ID NP_061975.2

Blocking Peptide EBP12200

Immunogen Peptide with sequence C-SEQASAQSESP, from the internal region of the protein sequence according to NP_061975.2.

Peptide Sequence C-SEQASAQSESP

Purification Method Purified from goat serum by ammonium sulphate precipitation followed by antigen affinity chromatography using the immunizing peptide.

Shipping Instructions Refrigerated



Predicted Species	Human, Pig, Cow
Reactive Species	Human, Pig
Human Gene ID	3202
Product Grade	https://prod-vector-labs-pimcore-assets.s3.us-east-1.amazonaws.com/assets/products/image/elite_medium.png
IHC Results	Paraffin embedded Human Prostate. Recommended concentration: 5µg/ml.
ELISA	
Detection Limit	Antibody detection limit dilution 1:2000.
Western Blot	Approx 30kDa band observed in Pig Kidney lysates (calculated MW of 29.3kDa according to Pig NP_001182161.1). Recommended concentration: 1-3µg/ml.
Application Type	Pep-ELISA, WB, IHC

DOCUMENTS

- [Data Sheet](#)

GALLERY IMAGES

