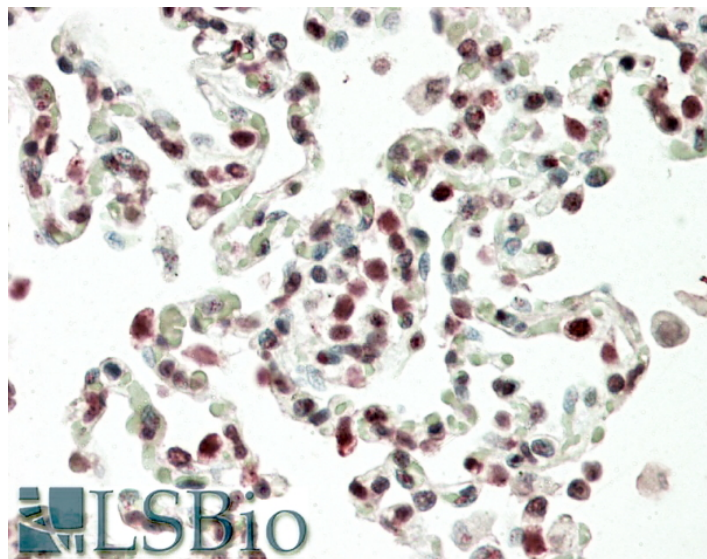


# GOAT ANTI-HOXB6 ANTIBODY

**SKU:** EB12202



## SPECIFICATIONS

<b>Unit Size</b>	100 µg
<b>Synonym / Alias Names</b>	homeobox protein Hu-2 homeobox protein Hox-B6 homeobox protein Hox-2B homeobox protein Hox-2.2 homeo box B6 homeo box 2B Hox-2.2 HU-2 HOX2B HOX2 homeobox B6 HOXB6
<b>Accession ID</b>	NP_061825.2
<b>Blocking Peptide</b>	EBP12202
<b>Immunogen</b>	Peptide with sequence EPRKSDCAQDKS, from the internal region of the protein sequence according to NP_061825.2.
<b>Peptide Sequence</b>	EPRKSDCAQDKS
<b>Shipping Instructions</b>	Refrigerated
<b>Predicted Species</b>	Human, Mouse, Rat, Dog, Pig, Cow
<b>Reactive Species</b>	Human

<b>Human Gene ID</b>	3216
<b>Mouse Gene ID</b>	15414
<b>Rat Gene ID</b>	497986
<b>Product Grade</b>	<a href="https://prod-vector-labs-pimcore-assets.s3.us-east-1.amazonaws.com/assets/products/image/elite_medium.png">https://prod-vector-labs-pimcore-assets.s3.us-east-1.amazonaws.com/assets/products/image/elite_medium.png</a>
<b>IHC Results</b>	In paraffin embedded Human Lung shows nuclear staining in the alvioli. Recommended concentration, 5-10µg/ml.
<b>ELISA Detection Limit</b>	Antibody detection limit dilution 1:1000.
<b>Western Blot</b>	Approx 26kDa band observed in lysates of cell lines HEK293, CACO-2 and MRC5 PD19 (calculated MW of 25.4kDa according to NP_061825.2). Recommended concentration: 1-3µg/ml.
<b>Application Type</b>	Pep-ELISA, WB, IHC

## DOCUMENTS

- [Data Sheet](#)

## GALLERY IMAGES

