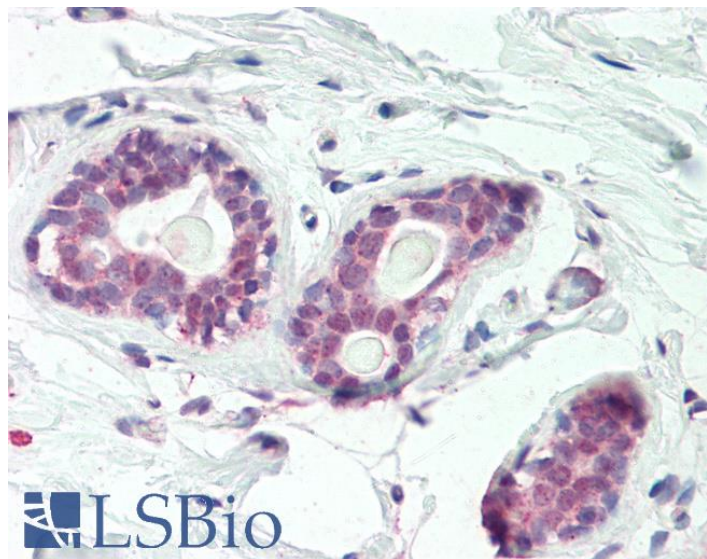


GOAT ANTI-HOXC10 ANTIBODY

SKU: EB12206



SPECIFICATIONS

Formulation Supplied at 0.5 mg/ml in Tris saline, 0.02% sodium azide, pH7.3 with 0.5% bovine serum albumin.

Unit Size 100 µg

Storage Instructions Aliquot and store at -20°C. Minimize freezing and thawing.

Synonym / Alias Names HOXC10|homeobox C10|HOX3|homeo box C10|homeobox protein Hox-3|homeobox protein Hox-C10|homeoprotein C10

Accession ID NP_059105.2

Blocking Peptide EBP12206

Immunogen Peptide with sequence C-EQRASLNPRAEHLE, from the internal region of the protein sequence according to NP_059105.2.

Peptide Sequence C-EQRASLNPRAEHLE

Purification Method Purified from goat serum by ammonium sulphate precipitation followed by antigen affinity chromatography using the immunizing peptide.

Shipping Instructions Refrigerated

Predicted Species	Human, Pig, Cow
Reactive Species	Human
Human Gene ID	3226
Product Grade	https://prod-vector-labs-pimcore-assets.s3.us-east-1.amazonaws.com/assets/products/image/elite_medium.png
IHC Results	Paraffin embedded Human Breast. Recommended concentration: 5µg/ml.
ELISA	
Detection Limit	Antibody detection limit dilution 1:64000.
Western Blot	Approx 36kDa band observed in lysates of cell line HepG2 (calculated MW of 38.1kDa according to NP_059105.2). Recommended concentration: 1-3µg/ml. Primary incubation was 1 hour.
Application Type	Pep-ELISA, WB, IHC

DOCUMENTS

- [Data Sheet](#)

GALLERY IMAGES

