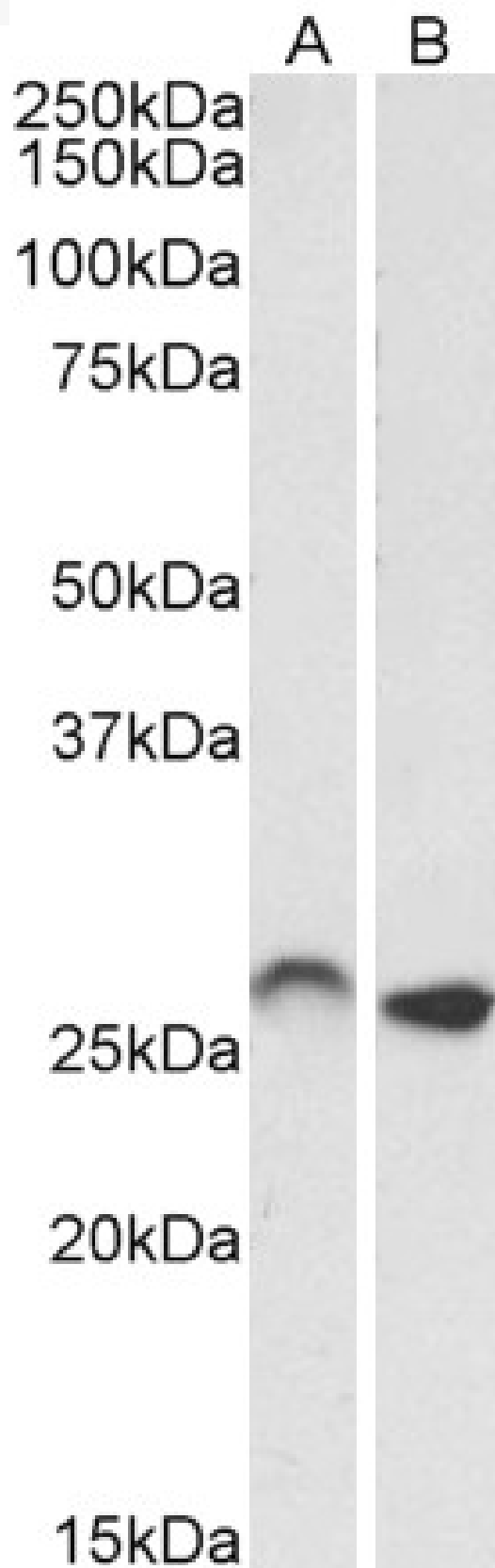


GOAT ANTI-HOXC6 (ISOFORM 1) ANTIBODY

SKU: EB12208



SPECIFICATIONS

| | |
|------------------------------|---|
| Formulation | Supplied at 0.5 mg/ml in Tris saline, 0.02% sodium azide, pH7.3 with 0.5% bovine serum albumin. |
| Unit Size | 100 µg |
| Storage Instructions | Aliquot and store at -20°C. Minimize freezing and thawing. |
| Synonym / Alias Names | homeobox protein Hox-C6 homeobox protein Hox-3C homeobox protein HHO.C8 homeobox protein CP25 homeo box C8 protein homeo box C6 homeo box 3C HOXC6 HOXC3 HHO.C8 CP25 homeobox C6 HOXC6 |
| Accession ID | NP_004494.1 |
| Blocking Peptide | EBP12208 |
| Immunogen | Peptide with sequence C-PNVALNSTAYDPVRH, from the internal region (near N Terminus) of the protein sequence according to NP_004494.1. |
| Product Comments | This antibody is expected to recognize isoform 1 (NP_004494.1) only. |
| Peptide Sequence | C-PNVALNSTAYDPVRH |
| Purification Method | Purified from goat serum by ammonium sulphate precipitation followed by antigen affinity chromatography using the immunizing peptide. |
| Shipping Instructions | Refrigerated |
| Predicted Species | Human, Mouse, Rat, Dog, Pig, Cow |
| Reactive Species | Human, Mouse, Rat, Pig |
| Human Gene ID | 3223 |
| Mouse Gene ID | 15425 |
| Rat Gene ID | 252885 |
| Product Grade | https://prod-vector-labs-pimcore-assets.s3.us-east-1.amazonaws.com/assets/products/image/elite_medium.png |
| IHC Results | Paraffin embedded Human Tonsil. Recommended concentration: 5µg/ml. |
| ELISA Detection Limit | Antibody detection limit dilution 1:128000. |
| Western Blot | Approx 26kDa band observed in Human Brain (Olfactory bulb) and in Rat and Pig Brain lysates (calculated MW of 26.9kDa according to NP_004494.1). In Mouse Brain lysates the band runs like a 27kDa band. Recommended concentration: 0.03-0.1µg/ml. Primary incubation was 1 hour. |
| Application Type | Pep-ELISA, WB, IHC |

DOCUMENTS

- [Data Sheet](#)

GALLERY IMAGES

