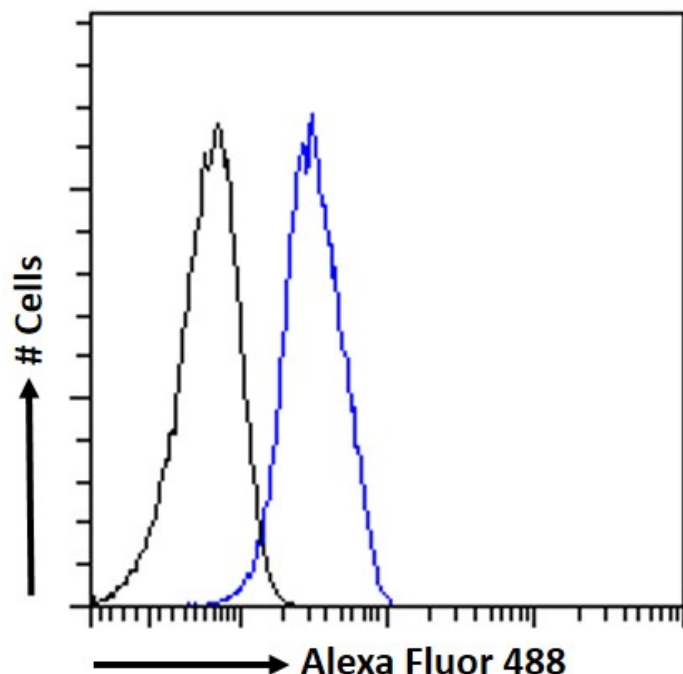


GOAT ANTI-HP ALPHA CHAIN ANTIBODY

SKU: EB11197



SPECIFICATIONS

Formulation Supplied at 0.5 mg/ml in Tris saline, 0.02% sodium azide, pH7.3 with 0.5% bovine serum albumin.

Unit Size 100 µg

Storage Instructions Aliquot and store at -20°C. Minimize freezing and thawing.

Synonym / Alias Names HP| MGC111141| HPA1S| HP2ALPHA2| haptoglobin, beta polypeptide| haptoglobin, alpha polypeptide| haptoglobin alpha(2FS)-beta| haptoglobin alpha(1S)-beta| haptoglobin| BP| binding peptide

Usage Summary **Flow Cytometry:** Flow cytometric analysis of HepG2 cells. Recommended concentration: 10ug/ml.

Accession ID NP_005134.1; NP_001119574.1; NP_001305067.1

Blocking Peptide EBP11197

Immunogen Peptide with sequence QCKNYYKLRTGED, from the internal region of the protein sequence according to NP_005134.1; NP_001119574.1; NP_001305067.1.

Product Comments	This antibody is expected to recognize both reported isoforms (NP_005134.1; NP_001119574.1).
Peptide Sequence	QCKNYYKLRTGD
Purification Method	Purified from goat serum by ammonium sulphate precipitation followed by antigen affinity chromatography using the immunizing peptide.
Shipping Instructions	Refrigerated
Predicted Species	Human
Reactive Species	Human
Human Gene ID	3240
Product Grade	https://prod-vector-labs-pimcore-assets.s3.us-east-1.amazonaws.com/assets/products/image/elite_medium.png
ELISA Detection Limit	Antibody detection limit dilution 1:32000.
Western Blot	Approx 18kDa band observed in Human Liver lysates and approx. 20kDa in preliminary testing of HepG2 cell lysate (calculated MW of 18kDa according to alpha chain cleaved from NP_005134.1). Recommended concentration: 0.01-0.03µg/ml. Primary incubation 1 hour at room temperature.
Application Type	Pep-ELISA, WB, FC

DOCUMENTS

- [Data Sheet](#)

GALLERY IMAGES

