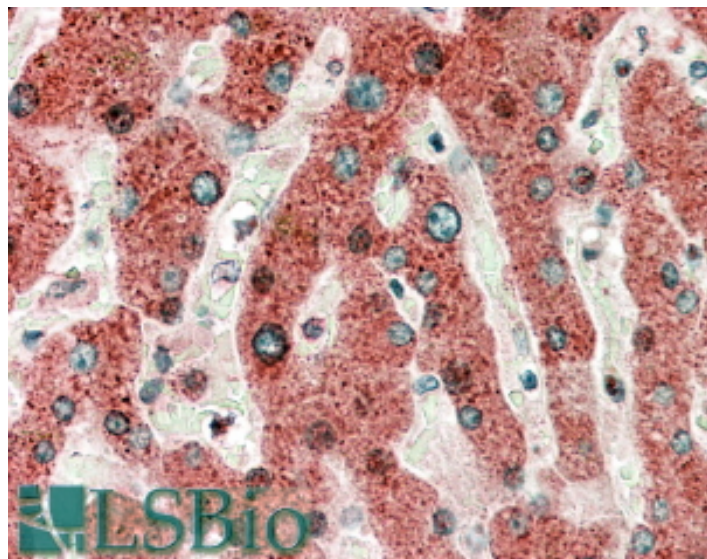


# GOAT ANTI-HRASLS2 ANTIBODY

**SKU:** EB08620



## SPECIFICATIONS

**Formulation** Supplied at 0.5 mg/ml in Tris saline, 0.02% sodium azide, pH7.3 with 0.5% bovine serum albumin.

**Unit Size** 100 µg

**Storage Instructions** Aliquot and store at -20°C. Minimize freezing and thawing.

**Synonym /**

**Alias** HRASLS2|HRAS-like suppressor 2|FLJ20556

**Names**

**Accession ID** NP\_060348.1

**Blocking Peptide** EBP08620

**Immunogen** Peptide with sequence QELPYSLTSDNC, from the internal region of the protein sequence according to NP\_060348.1.

**Product Comments** This design was based on provisional sequence data.

**Peptide Sequence** QELPYSLTSDNC

**Purification Method** Purified from goat serum by ammonium sulphate precipitation followed by antigen affinity chromatography using the immunizing peptide.

<b>Shipping Instructions</b>	Refrigerated
<b>Predicted Species</b>	Human
<b>Reactive Species</b>	Human
<b>Human Gene ID</b>	54979
<b>Product Grade</b>	<a href="https://prod-vector-labs-pimcore-assets.s3.us-east-1.amazonaws.com/assets/products/image/elite_medium.png">https://prod-vector-labs-pimcore-assets.s3.us-east-1.amazonaws.com/assets/products/image/elite_medium.png</a>
<b>IHC Results</b>	In paraffin embedded Human Liver shows a granular pattern in the cytoplasm of hepatocytes. Recommended concentration, 5-10µg/ml.
<b>ELISA</b>	
<b>Detection Limit</b>	Antibody detection limit dilution 1:16000.
<b>Western Blot</b>	Preliminary experiments gave an approx. 21kDa band in Human Kidney lysates after 0.5 µg/ml antibody staining. Please note that currently we cannot find an explanation in the literature for the band we observe given the calculated size of 17.4kDa according to NP_060348.1 (provisional). The 21kDa band was successfully blocked by incubation with the immunizing peptide. We would appreciate any feedback from people in the field - have any results been reported with other antibodies/lysates? Have any further splice variants/modified forms been reported?
<b>Application Type</b>	Pep-ELISA, IHC

## DOCUMENTS

- [Data Sheet](#)

## GALLERY IMAGES

