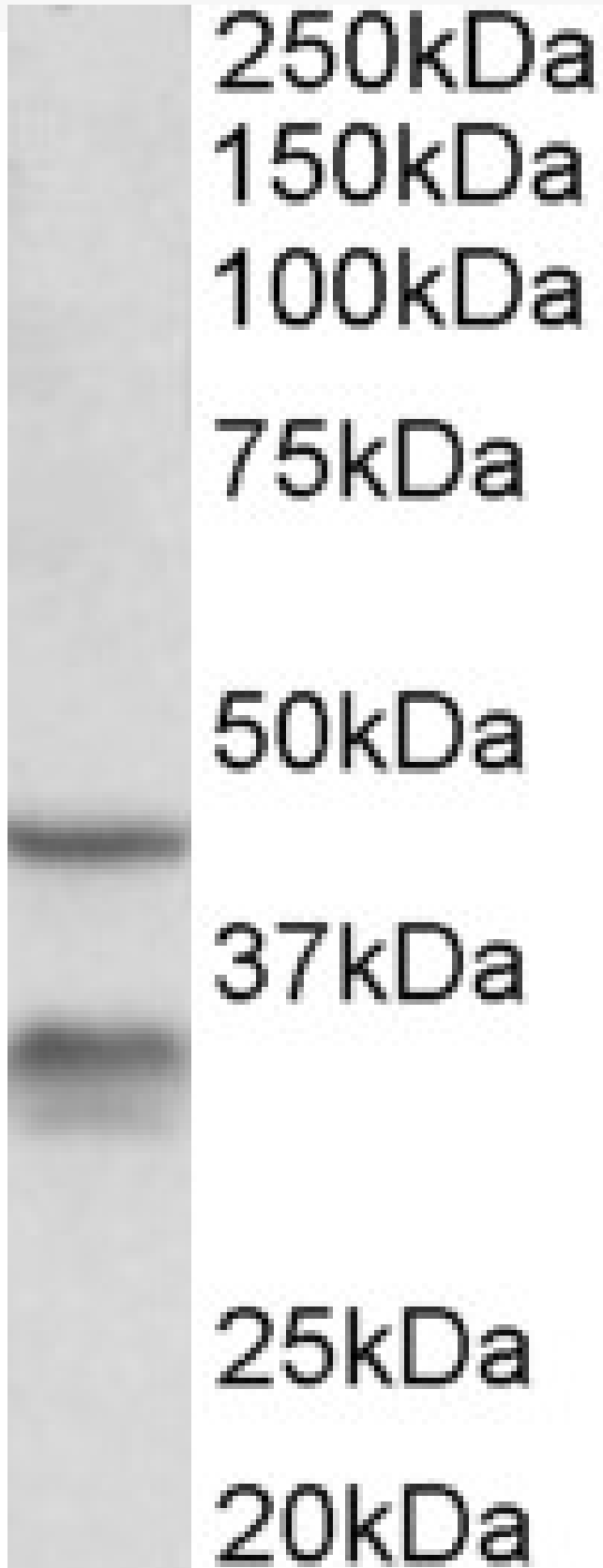


GOAT ANTI-HSD11B1 (MOUSE) ANTIBODY

SKU: EB11062



SPECIFICATIONS

Formulation Supplied at 0.5 mg/ml in Tris saline, 0.02% sodium azide, pH7.3 with 0.5% bovine serum albumin.

Unit Size 100 µg

Storage Instructions Aliquot and store at -20°C. Minimize freezing and thawing.

Synonym / Alias Names 11-beta-HSD1| 11-beta-hydroxysteroid dehydrogenase 1| 11-DH| corticosteroid 11-beta-dehydrogenase isozyme 1| HDL| HSD11| HSD11B| HSD11L| hydroxysteroid (11-beta) dehydrogenase 1| short chain dehydrogenase/reductase family 26C, member 1|Hsd11b1

Accession ID NP_032314.2

Blocking Peptide EBP11062

Immunogen Peptide with sequence C-TARSEEGQLQKVVS, from the internal region of the protein sequence according to NP_032314.2.

Peptide Sequence C-TARSEEGQLQKVVS

Purification Method Purified from goat serum by ammonium sulphate precipitation followed by antigen affinity chromatography using the immunizing peptide.

Shipping Instructions Refrigerated

Predicted Species Mouse, Rat

Reactive Species Mouse

Mouse Gene ID 15483

Rat Gene ID 25116

Product Grade https://prod-vector-labs-pimcore-assets.s3.us-east-1.amazonaws.com/assets/products/image/elite_medium.png

ELISA Detection Limit Antibody detection limit dilution 1:32000.

Western Blot Approx 32kDa band observed in Mouse Lung lysates (calculated MW of 32.4kDa according to NP_032314.2). Recommended concentration: 0.3-1µg/ml. An additional band of unknown identity was also consistently observed at 45kDa. This band was successfully blocked by incubation with the immunizing peptide. However, it remained visible in a KO background.

Application Type Pep-ELISA, WB

DOCUMENTS

- [Data Sheet](#)

GALLERY IMAGES

