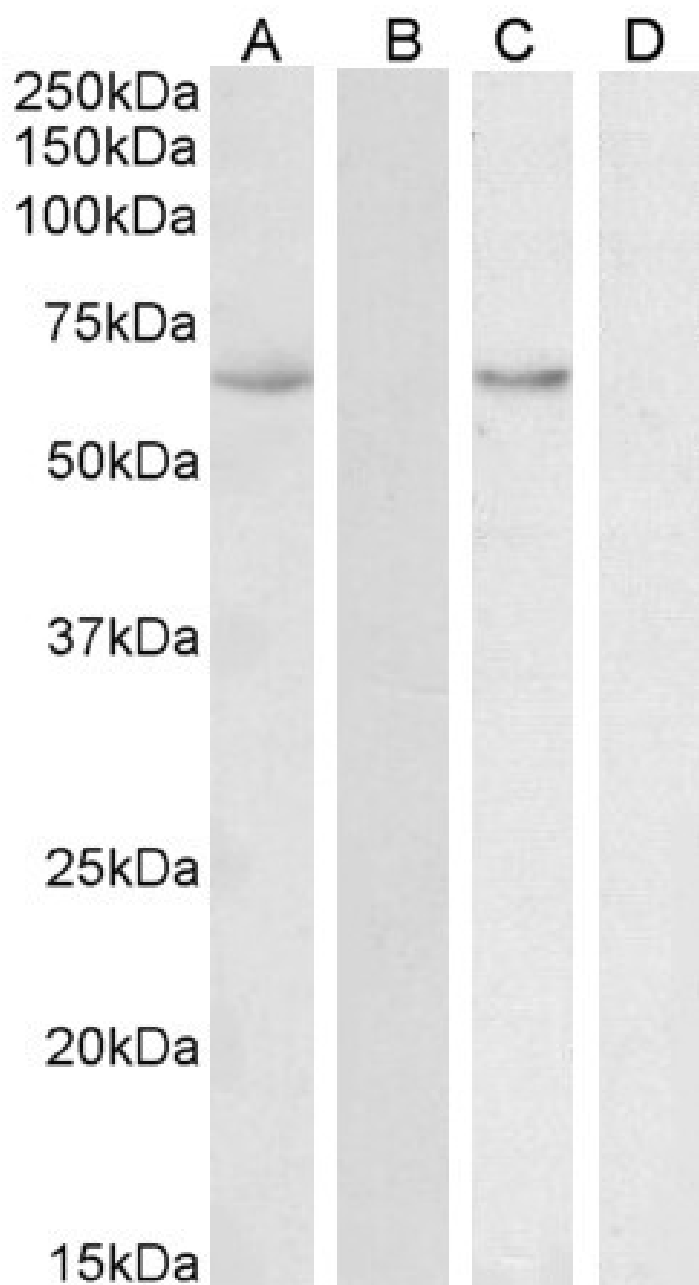


## GOAT ANTI-HSPA13 / STCH (AA83-95) ANTIBODY

SKU: EB11978



## SPECIFICATIONS

<b>Formulation</b>	Supplied at 0.5 mg/ml in Tris saline, 0.02% sodium azide, pH7.3 with 0.5% bovine serum albumin.
<b>Unit Size</b>	100 µg
<b>Storage</b>	Aliquot and store at -20°C. Minimize freezing and thawing.
<b>Instructions</b>	
<b>Synonym / Alias Names</b>	stress-70 protein chaperone microsome-associated 60 kDa protein stress 70 protein chaperone, microsome-associated, 60kDa stress 70 protein chaperone, microsome-associated, 60kD microsomal stress-70 protein ATPase core microsomal stress 70 protein ATPase core heat shock 70 kDa protein 13 STCH heat shock protein 70kDa family, member 13 HSPA13
<b>Accession ID</b>	NP_008879.3
<b>Blocking Peptide</b>	EBP11978
<b>Immunogen</b>	Peptide with sequence C-ESVELADSNPQNT, from the internal region of the protein sequence according to NP_008879.3.
<b>Peptide Sequence</b>	C-ESVELADSNPQNT
<b>Purification Method</b>	Purified from goat serum by ammonium sulphate precipitation followed by antigen affinity chromatography using the immunizing peptide.
<b>Shipping Instructions</b>	Refrigerated
<b>Predicted Species</b>	Human
<b>Reactive Species</b>	Human
<b>Human Gene ID</b>	6782
<b>Product Grade</b>	<a href="https://prod-vector-labs-pimcore-assets.s3.us-east-1.amazonaws.com/assets/products/image/elite_medium.png">https://prod-vector-labs-pimcore-assets.s3.us-east-1.amazonaws.com/assets/products/image/elite_medium.png</a>
<b>ELISA Detection Limit</b>	Antibody detection limit dilution 1:128000.
<b>Western Blot</b>	Approx 60-65kDa band observed in Human Uterus and Colon lysates (calculated MW of 51.9kDa according to NP_008879.3)..This band was successfully blocked by incubation with the immunizing peptide and corresponds to different antibodies from other sources. Recommended concentration: 0.1-0.3µg/ml. Primary incubation 1 hour at room temperature.
<b>Application Type</b>	Pep-ELISA, WB

## DOCUMENTS

- [Data Sheet](#)

## GALLERY IMAGES

