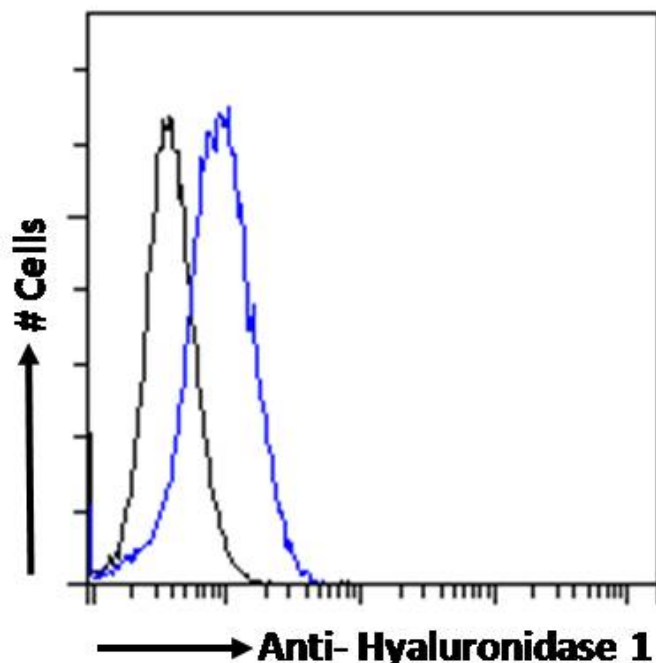


GOAT ANTI-HYALURONIDASE 1 ANTIBODY

SKU: EB07871



SPECIFICATIONS

Formulation Supplied at 0.5 mg/ml in Tris saline, 0.02% sodium azide, pH7.3 with 0.5% bovine serum albumin.

Unit Size 100 µg

Storage Instructions Aliquot and store at -20°C. Minimize freezing and thawing.

Synonym / Alias Names tumor suppressor LUCA-1|plasma hyaluronidase|hyaluronidase 1|NAT6|MGC45987|LUCA1|HYAL-1|hyaluronoglucosaminidase 1

Usage Summary **Immunofluorescence:** Strong expression of the protein seen in the cytoplasm of A431 and HeLa cells. Recommended concentration: 10µg/ml. **Flow Cytometry:** Flow cytometric analysis of HepG2 cells. Recommended concentration: 10ug/ml.

Accession ID NP_009296.1; NP_695014.1; NP_695015.1; NP_695017.1;

Blocking Peptide EBP07871

Immunogen Peptide with sequence ENTRTKESCQAIKEY, from the internal region of the protein sequence according to NP_009296.1; NP_695014.1; NP_695015.1; NP_695017.1;.

Product	This antibody is expected to recognise isoform 1 (NP_009296.1), isoform 3 (NP_695015.1) and isoform 5 (NP_695017.1).
Comments	
Peptide Sequence	ENTRTKESCQAIKEY
Purification Method	Purified from goat serum by ammonium sulphate precipitation followed by antigen affinity chromatography using the immunizing peptide.
Shipping Instructions	Refrigerated
Predicted Species	Human, Mouse, Rat, Dog, Pig, Cow
Reactive Species	Human
Human Gene ID	3373
Product Grade	https://prod-vector-labs-pimcore-assets.s3.us-east-1.amazonaws.com/assets/products/image/elite_plus_medium.png
IHC Results	Paraffin embedded Human Liver. Recommended concentration: 5µg/ml.
ELISA	
Detection Limit	Antibody detection limit dilution 1:128000.
Application Type	Pep-ELISA, IHC, IF, FC

DOCUMENTS

- [Data Sheet](#)

GALLERY IMAGES

