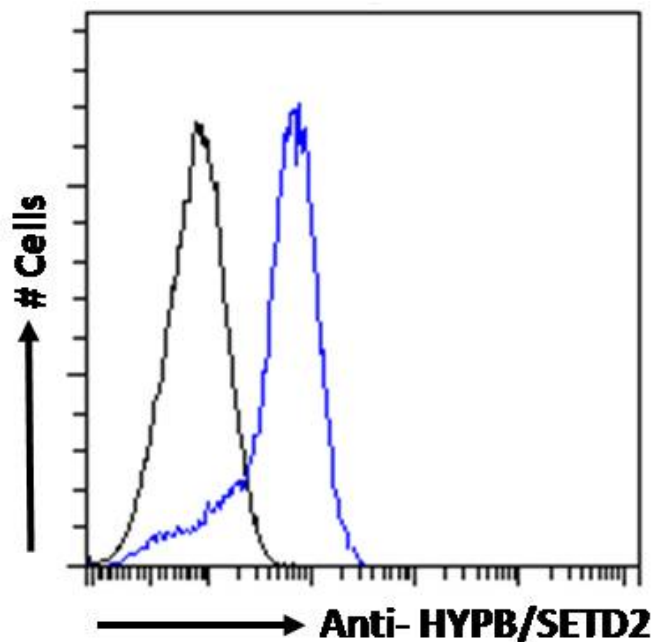


GOAT ANTI-HYPB / SETD2 (INTERNAL REGION) ANTIBODY

SKU: EB08118



SPECIFICATIONS

Formulation Supplied at 0.5 mg/ml in Tris saline, 0.02% sodium azide, pH7.3 with 0.5% bovine serum albumin.

Unit Size 100 µg

Storage Instructions Aliquot and store at -20°C. Minimize freezing and thawing.

Synonym / Alias Names huntingtin interacting protein B|huntingtin interacting protein 1|KIAA1732|HYPB|HSPC069|HIF-1|FLJ45883|FLJ23184|FLJ22472|FLJ16420|SET domain containing 2|SETD2

Usage Summary Flow Cytometry: Flow cytometric analysis of HepG2 cells. Recommended concentration: 10ug/ml.

Accession ID NP_054878.5; NP_001336299.1

Blocking Peptide EBP08118

Immunogen	Peptide with sequence C-ERDPDKQTQNKE, from the internal region of the protein sequence according to NP_054878.5; NP_001336299.1.
Peptide Sequence	C-ERDPDKQTQNKE
Purification Method	Purified from goat serum by ammonium sulphate precipitation followed by antigen affinity chromatography using the immunizing peptide.
Shipping Instructions	Refrigerated
Predicted Species	Human, Mouse, Dog, Pig
Reactive Species	Human
Human Gene ID	29072
Mouse Gene ID	235626
Product Grade	https://prod-vector-labs-pimcore-assets.s3.us-east-1.amazonaws.com/assets/products/image/elite_medium.png
ELISA Detection Limit	Antibody detection limit dilution 1:128000.
Application Type	Pep-ELISA, FC

SELECTED REFERENCES

[{"pmid": 28130125, "intro": "**This antibody (previous batch) has been successfully used in Western blot on Mouse:**", "title": "Histone methyltransferase Setd2 is critical for the proliferation and differentiation of myoblasts.", "author": "Yi X, Tao Y, Lin X, Dai Y, Yang T, Yue X, Jiang X, Li X, Jiang DS, Andrade KC, Chang J.", "journal": "Biochim Biophys Acta. 2017 Apr;1864(4):697-707."}]

DOCUMENTS

- [Data Sheet](#)

GALLERY IMAGES

