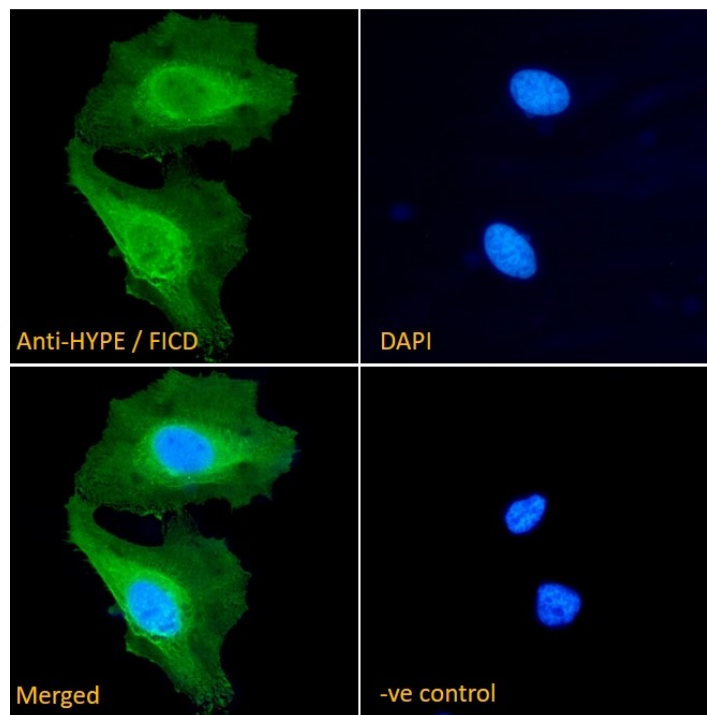


GOAT ANTI-HYPE / FICD ANTIBODY

SKU: EB10860



SPECIFICATIONS

Formulation Supplied at 0.5 mg/ml in Tris saline, 0.02% sodium azide, pH7.3 with 0.5% bovine serum albumin.

Unit Size 100 µg

Storage Instructions Aliquot and store at -20°C. Minimize freezing and thawing.

Synonym / Alias Names huntingtin interacting protein 13| fic S-phase protein cell division homolog| Huntingtin interacting protein E| UNQ3041| MGC5623| HYPE| HIP13| FIC domain containing|FICD

Usage Summary **Immunofluorescence:** Strong expression of the protein seen in the cytoplasm and nuclei of HeLa cells. Recommended concentration: 10µg/ml. **Flow Cytometry:** Flow cytometric analysis of A549 cells. Recommended concentration: 10ug/ml.

Accession ID NP_009007.2

Blocking Peptide EBP10860

Immunogen	Peptide with sequence C-PPITIRKEQRSD, from the internal region of the protein sequence according to NP_009007.2.
Peptide Sequence	C-PPITIRKEQRSD
Purification Method	Purified from goat serum by ammonium sulphate precipitation followed by antigen affinity chromatography using the immunizing peptide.
Shipping Instructions	Refrigerated
Predicted Species	Human
Reactive Species	Human
Human Gene ID	11153
Mouse Gene ID	231630
Rat Gene ID	288741
Product Grade	https://prod-vector-labs-pimcore-assets.s3.us-east-1.amazonaws.com/assets/products/image/elite_plus_medium.png
ELISA Detection Limit	Antibody detection limit dilution 1:16000.
Western Blot	Approx. 55kDa band observed in Human Tonsil and Kidney lysates, approx. 55-60kDa in lysates of cell lines HeLa and HEK293, and approx. 60kDa in HepG2 cell lysate, which was successfully blocked by incubation with the immunizing peptide (calculated MW of 51.8kDa according to NP_009007.2). Recommended concentration: 0.1-0.5µg/ml. Primary incubation 1 hour at room temperature.
Application Type	Pep-ELISA, WB, IF, FC

DOCUMENTS

- [Data Sheet](#)

GALLERY IMAGES

