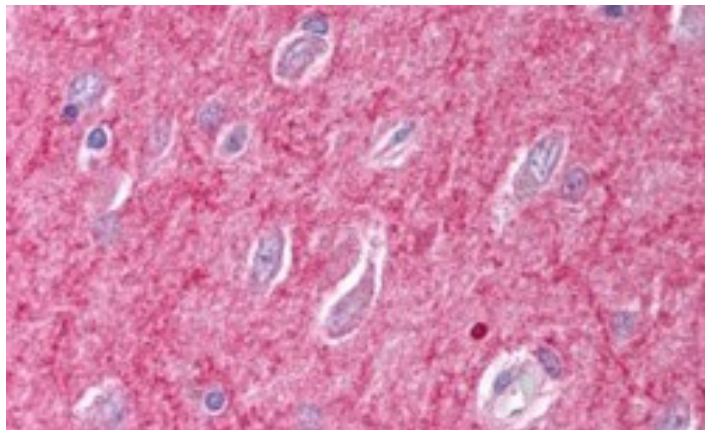


GOAT ANTI-ICAM5 PRECURSOR ANTIBODY

SKU: EB07506



SPECIFICATIONS

Formulation Supplied at 0.5 mg/ml in Tris saline, 0.02% sodium azide, pH7.3 with 0.5% bovine serum albumin.

Unit Size 100 µg

Storage Instructions Aliquot and store at -20°C. Minimize freezing and thawing.

Synonym / Alias Names ICAM5|intercellular adhesion molecule 5, telencephalin|TLCN|TLN|intercellular adhesion molecule 5|telencephalin

Accession ID NP_003250.3

Blocking Peptide EBP07506

Immunogen Peptide with sequence C-ESPAEGEVFAIQ, from the C Terminus of the protein sequence according to NP_003250.3.

Peptide Sequence C-ESPAEGEVFAIQ

Purification Method Purified from goat serum by ammonium sulphate precipitation followed by antigen affinity chromatography using the immunizing peptide.

Shipping Instructions Refrigerated

Predicted Species Human, Mouse, Rat, Pig, Cow

Reactive Species Human

Human Gene ID	7087
Mouse Gene ID	15898
Rat Gene ID	313785
Product Grade	https://prod-vector-labs-pimcore-assets.s3.us-east-1.amazonaws.com/assets/products/image/elite_medium.png
IHC Results	In paraffin embedded Human Brain (Cerebral Cortex) shows axon/dendrite staining leaving cell bodies relatively unstained. Recommended concentration, 2-4µg/ml.
ELISA Detection Limit	Antibody detection limit dilution 1:128000.
Western Blot	Preliminary experiments gave an approx 200-250kDa band in lysates of Human Brain (Frontal Cortex and Hippocampus) and Mouse Brain after 0.05 µg/ml antibody staining. Please note that currently we cannot find an explanation in the literature for the band we observe given the calculated size of 97.2kDa according to NP_003250.2. The 200-250kDa band was successfully blocked by incubation with the immunizing peptide. We would appreciate any feedback from people in the field - have any results been reported with other antibodies/lysates? Have any further splice variants/modified forms been reported?
Application Type	Pep-ELISA, IHC

DOCUMENTS

- [Data Sheet](#)

GALLERY IMAGES

