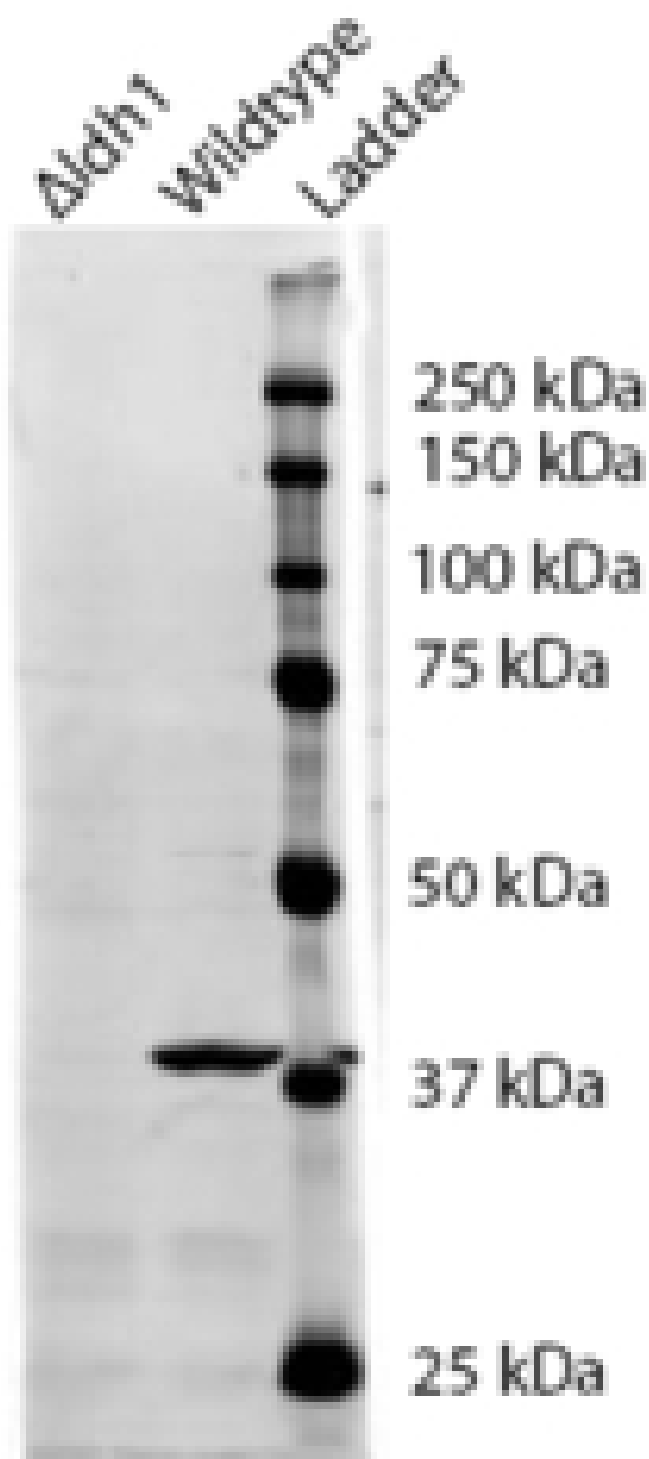


# GOAT ANTI-IDH1 (YEAST) ANTIBODY

**SKU:** EB10652



---

## SPECIFICATIONS

<b>Formulation</b>	Supplied at 0.5 mg/ml in Tris saline, 0.02% sodium azide, pH7.3 with 0.5% bovine serum albumin.
<b>Unit Size</b>	100 µg
<b>Storage Instructions</b>	Aliquot and store at -20°C. Minimize freezing and thawing.
<b>Synonym / Alias Names</b>	IDH1  Idh1p  YNL037C  Subunit of mitochondrial NAD(+)-dependent isocitrate dehydrogenase, which catalyzes the oxidation of isocitrate to alpha-ketoglutarate in the TCA cycle
<b>Accession ID</b>	NP_014361.1
<b>Blocking Peptide</b>	EBP10652
<b>Immunogen</b>	Peptide with sequence C-EPGSRHVGLDIKGQN, from the internal region of the protein sequence according to NP_014361.1.
<b>Peptide Sequence</b>	C-EPGSRHVGLDIKGQN
<b>Purification Method</b>	Purified from goat serum by ammonium sulphate precipitation followed by antigen affinity chromatography using the immunizing peptide.
<b>Shipping Instructions</b>	Refrigerated
<b>Predicted Species</b>	Saccharomyces cerevisiae
<b>Reactive Species</b>	S.cerevisiae S288c
<b>Product Grade</b>	<a href="https://prod-vector-labs-pimcore-assets.s3.us-east-1.amazonaws.com/assets/products/image/elite_medium.png">https://prod-vector-labs-pimcore-assets.s3.us-east-1.amazonaws.com/assets/products/image/elite_medium.png</a>
<b>ELISA Detection Limit</b>	Antibody detection limit dilution 1:16000.
<b>Western Blot</b>	Approx 38kDa band observed in wildtype lysates of S.cerevisiae (calculated MW of 39.3kDa according to NP_014361.1). Recommended concentration: 0.3-1µg/ml.
<b>Application Type</b>	Pep-ELISA, WB

## DOCUMENTS

- [Data Sheet](#)

## GALLERY IMAGES

