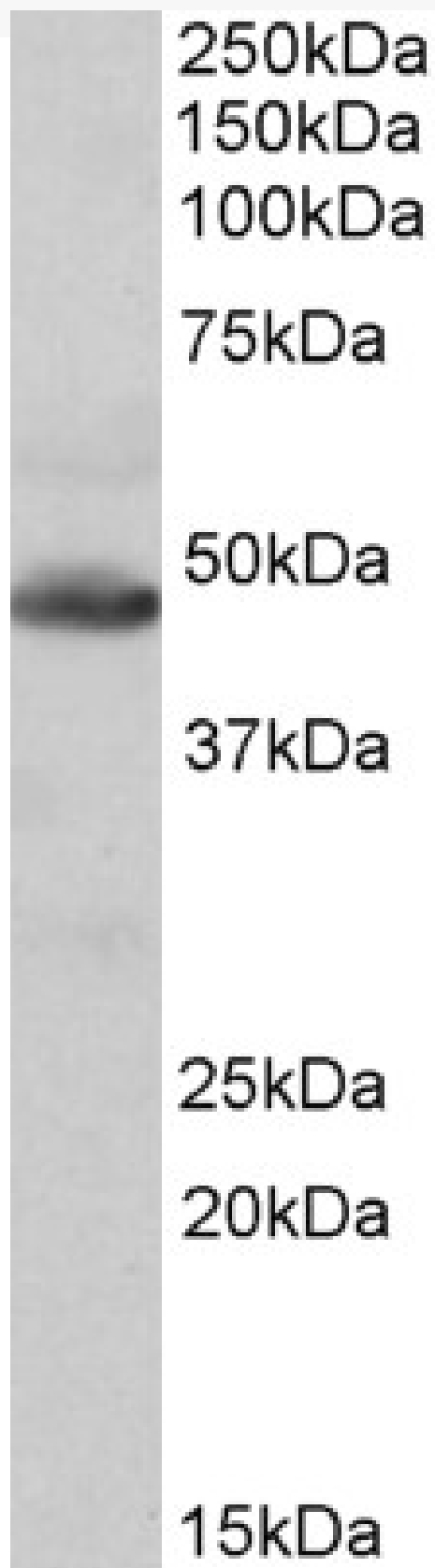


# GOAT ANTI-IDH2 ANTIBODY

**SKU:** EB10529



## SPECIFICATIONS

<b>Formulation</b>	Supplied at 0.5 mg/ml in Tris saline, 0.02% sodium azide, pH7.3 with 0.5% bovine serum albumin.
<b>Unit Size</b>	100 µg
<b>Storage Instructions</b>	Aliquot and store at -20°C. Minimize freezing and thawing.
<b>Synonym / Alias Names</b>	IDH2 oxalosuccinate decarboxylase NADP+-specific ICDH mNADP-IDH isocitrate dehydrogenase, mitochondrial isocitrate dehydrogenase 2 (NADP+), mitochondrial IDPM IDP IDHM IDH ICD-M
<b>Accession ID</b>	NP_002159.2
<b>Blocking Peptide</b>	EBP10529
<b>Immunogen</b>	Peptide with sequence CIHGLSNVKLNE, from the internal region of the protein sequence according to NP_002159.2.
<b>Peptide Sequence</b>	CIHGLSNVKLNE
<b>Purification Method</b>	Purified from goat serum by ammonium sulphate precipitation followed by antigen affinity chromatography using the immunizing peptide.
<b>Shipping Instructions</b>	Refrigerated
<b>Predicted Species</b>	Human, Mouse, Rat, Dog, Cow, Pig
<b>Reactive Species</b>	Human, Mouse, Rat, Pig
<b>Human Gene ID</b>	3418
<b>Mouse Gene ID</b>	269951
<b>Rat Gene ID</b>	361596
<b>Product Grade</b>	<a href="https://prod-vector-labs-pimcore-assets.s3.us-east-1.amazonaws.com/assets/products/image/elite_medium.png">https://prod-vector-labs-pimcore-assets.s3.us-east-1.amazonaws.com/assets/products/image/elite_medium.png</a>
<b>IHC Results</b>	Paraffin embedded Human Skeletal Muscle. Recommended concentration: 3.75µg/ml.
<b>ELISA Detection Limit</b>	Antibody detection limit dilution 1:16000.
<b>Western Blot</b>	Approx 48kDa band observed in Mouse, Rat and Pig Heart lysates (calculated MW of 50.9kDa according to Mouse NP_766599.2). Recommended concentration: 0.1-0.3µg/ml. Primary incubation was 1 hour.
<b>Application Type</b>	Pep-ELISA, WB, IHC

## DOCUMENTS

- [Data Sheet](#)

## GALLERY IMAGES

