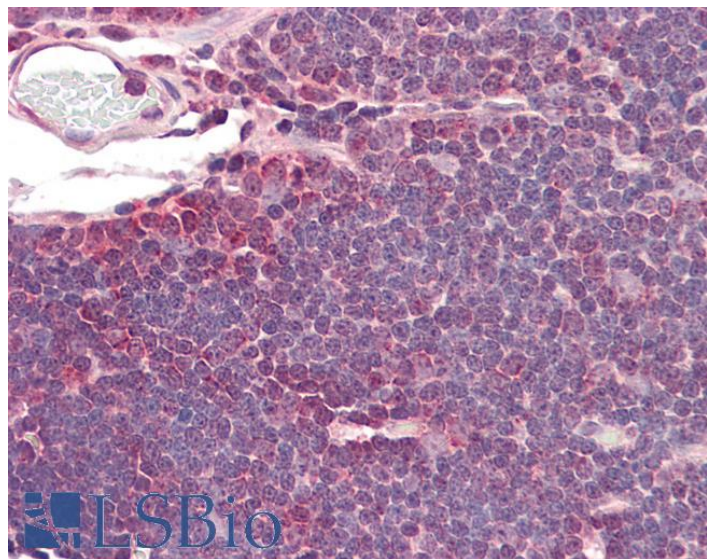


GOAT ANTI-IDH3A ANTIBODY

SKU: EB10995



SPECIFICATIONS

Formulation	Supplied at 0.5 mg/ml in Tris saline, 0.02% sodium azide, pH7.3 with 0.5% bovine serum albumin.
Unit Size	100 µg
Storage Instructions	Aliquot and store at -20°C. Minimize freezing and thawing.
Synonym / Alias	isocitric dehydrogenase subunit alpha isocitrate dehydrogenase [NAD] subunit alpha, mitochondrial isocitrate dehydrogenase (NAD+) alpha chain NAD+-specific ICDH NAD(H)-specific isocitrate dehydrogenase alpha subunit NAD(+)-specific ICDH subunit alpha H-IDH alpha isocitrate dehydrogenase 3 (NAD+) alpha IDH3A
Accession ID	NP_005521.1
Blocking Peptide	EBP10995
Immunogen	Peptide with sequence DFTEEICRRVKDLD, from the C Terminus of the protein sequence according to NP_005521.1.
Peptide Sequence	DFTEEICRRVKDLD
Purification Method	Purified from goat serum by ammonium sulphate precipitation followed by antigen affinity chromatography using the immunizing peptide.
Shipping Instructions	Refrigerated

Predicted Species	Human, Mouse, Rat, Dog, Pig, Cow
Reactive Species	Human, Mouse, Rat, Pig
Human Gene ID	3419
Mouse Gene ID	67834
Rat Gene ID	114096
Product Grade	https://prod-vector-labs-pimcore-assets.s3.us-east-1.amazonaws.com/assets/products/image/elite_medium.png
IHC Results	Paraffin embedded Human Thymus. Recommended concentration: 3.75µg/ml.
ELISA	
Detection Limit	Antibody detection limit dilution 1:32000.
Western Blot	Approx 37kDa band observed in lysates of Human Lymph Nodes, and of cell line DAUDI, and 38kDa in Human, Mouse and Rat Spleen lysates and in Pig Spleen and Skeletal Muscle lysates (calculated MW of 39.6kDa according to NP_005521.1). Recommended concentration: 0.1-0.3µg/ml. Primary incubation was 1 hour.
Application Type	Pep-ELISA, WB, IHC

DOCUMENTS

- [Data Sheet](#)

GALLERY IMAGES

