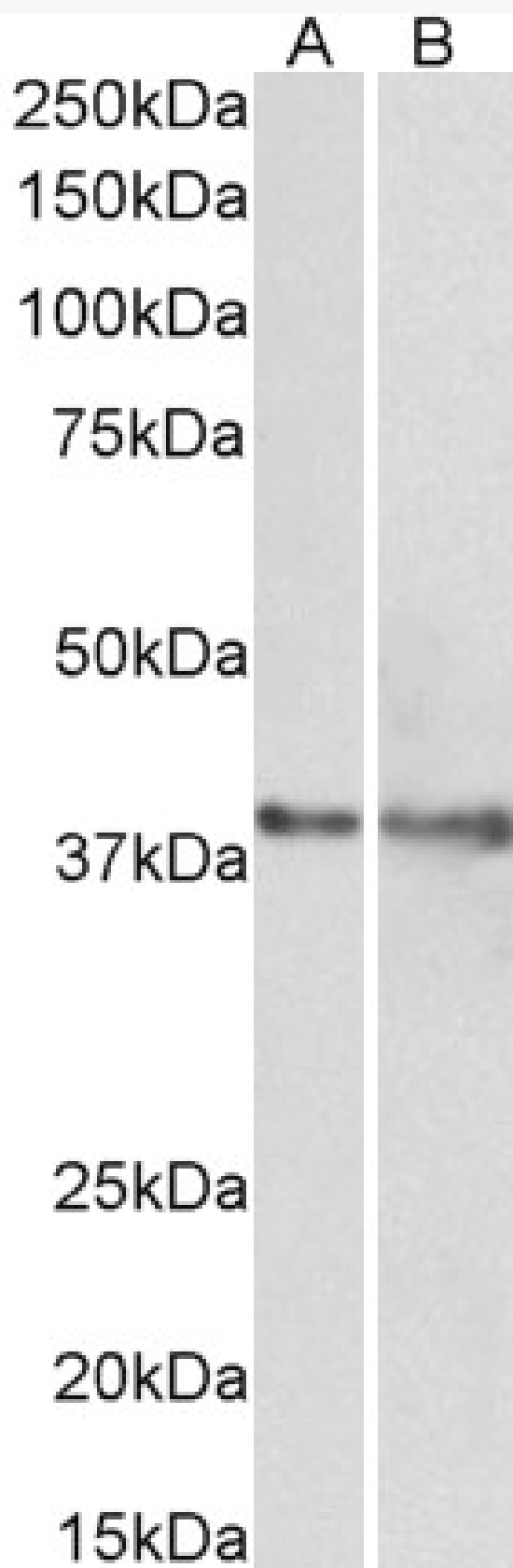


GOAT ANTI-IDH3G (AA337-350) ANTIBODY

SKU: EB11000



SPECIFICATIONS

Formulation	Supplied at 0.5 mg/ml in Tris saline, 0.02% sodium azide, pH7.3 with 0.5% bovine serum albumin.
Unit Size	100 µg
Storage Instructions	Aliquot and store at -20°C. Minimize freezing and thawing.
Synonym / Alias Names	isocitric dehydrogenase subunit gamma isocitrate dehydrogenase, NAD(+)-specific, mitochondrial, gamma subunit isocitrate dehydrogenase [NAD] subunit gamma, mitochondrial OTTHUMP00000025988 OTTHUMP00000025987 OTTHUMP00000025984 NAD+-specific ICDH NAD(+)-specific ICDH subunit gamma NAD (H)-specific isocitrate dehydrogenase gamma subunit IDH-gamma H-IDHG isocitrate dehydrogenase 3 (NAD+) gamma IDH3G
Accession ID	NP_004126.1; NP_777358.1
Blocking Peptide	EBP11000
Immunogen	Peptide with sequence C-DHLKLHSYATSIRK, from the internal region of the protein sequence according to NP_004126.1; NP_777358.1.
Product Comments	This antibody is expected to recognize both reported isoforms (NP_004126.1; NP_777358.1).
Peptide Sequence	C-DHLKLHSYATSIRK
Purification Method	Purified from goat serum by ammonium sulphate precipitation followed by antigen affinity chromatography using the immunizing peptide.
Shipping Instructions	Refrigerated
Predicted Species	Human, Mouse, Rat, Dog, Pig, Cow
Reactive Species	Human, Rat, Pig
Human Gene ID	3421
Mouse Gene ID	15929
Rat Gene ID	25179
Product Grade	https://prod-vector-labs-pimcore-assets.s3.us-east-1.amazonaws.com/assets/products/image/elite_medium.png
IHC Results	Paraffin embedded Human Kidney. Recommended concentration: 5µg/ml.
ELISA Detection Limit	Antibody detection limit dilution 1:16000.
Western Blot	Approx 38kDa band observed in lysates of cell line MCF7 and of Rat and Pig Heart (calculated MW of 41.5kDa according to NP_777358.1). Recommended concentration: 0.5-2µg/ml.
Application Type	Pep-ELISA, WB, IHC

DOCUMENTS

- [Data Sheet](#)

GALLERY IMAGES

