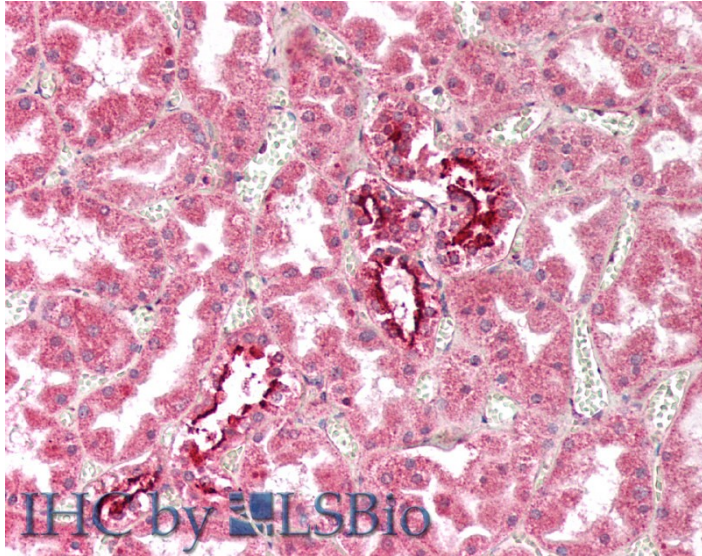


# GOAT ANTI-IFITM3 ANTIBODY

**SKU:** EB12862



## SPECIFICATIONS

<b>Formulation</b>	Supplied at 0.5 mg/ml in Tris saline, 0.02% sodium azide, pH7.3 with 0.5% bovine serum albumin.
<b>Unit Size</b>	100 µg
<b>Storage Instructions</b>	Aliquot and store at -20°C. Minimize freezing and thawing.
<b>Synonym / Alias Names</b>	IFITM3 interferon induced transmembrane protein 3 1-8U DSPA2b IP15 dispanin subfamily A member 2b interferon-induced transmembrane protein 3 interferon-inducible protein 1-8U
<b>Accession ID</b>	NP_066362.2
<b>Blocking Peptide</b>	EBP12862
<b>Immunogen</b>	Peptide with sequence C-HNPAPPTSTVIHIRS, from the internal region of the protein sequence according to NP_066362.2.
<b>Product Comments</b>	The immunizing peptide only differs by one residue from IFITM2 and therefore cross-reactivation of this antibody is to be expected.
<b>Peptide Sequence</b>	C-HNPAPPTSTVIHIRS
<b>Purification Method</b>	Purified from goat serum by ammonium sulphate precipitation followed by antigen affinity chromatography using the immunizing peptide.

<b>Shipping Instructions</b>	Refrigerated
<b>Predicted Species</b>	Human
<b>Reactive Species</b>	Human
<b>Human Gene ID</b>	10410
<b>Product Grade</b>	<a href="https://prod-vector-labs-pimcore-assets.s3.us-east-1.amazonaws.com/assets/products/image/elite_medium.png">https://prod-vector-labs-pimcore-assets.s3.us-east-1.amazonaws.com/assets/products/image/elite_medium.png</a>
<b>IHC Results</b>	Paraffin embedded Human Kidney and Spleen. Recommended concentration: 2.5µg/ml.
<b>ELISA Detection Limit</b>	Antibody detection limit dilution 1:64000.
<b>Western Blot</b>	Approx 17kDa band observed in lysates of cell line HeLa (calculated MW of 14.6kDa according to NP_066362.2). The observed molecular weight corresponds to the lipidated form. Recommended concentration: 0.3-1µg/ml. Primary incubation was 1 hour.
<b>Application Type</b>	Pep-ELISA, WB, IHC

## DOCUMENTS

- [Data Sheet](#)

## GALLERY IMAGES

