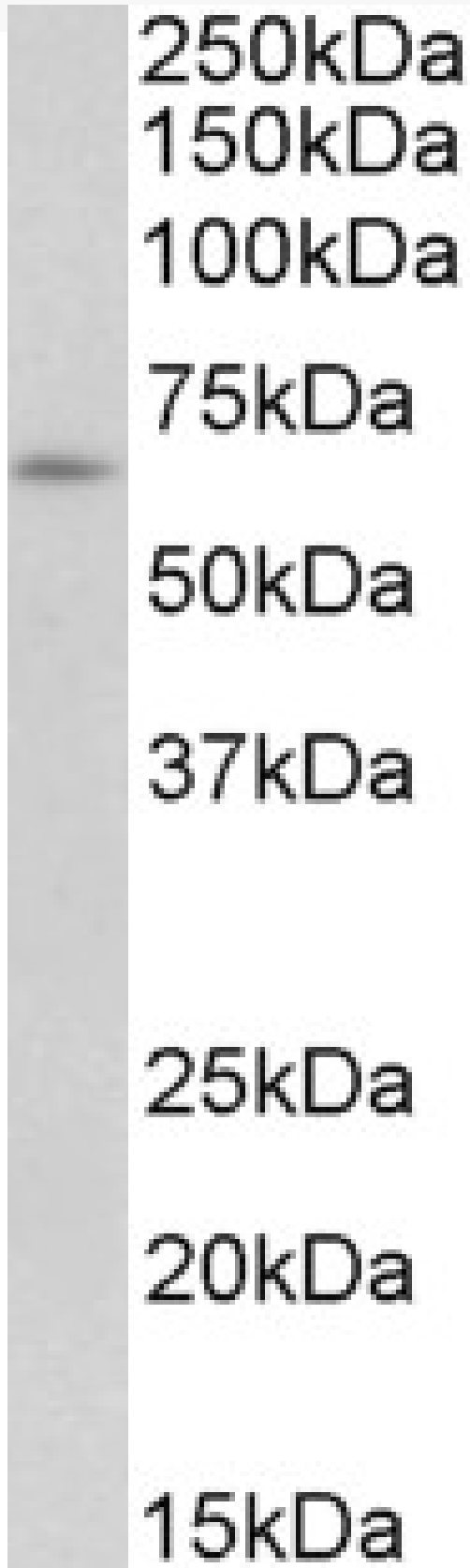


# GOAT ANTI-IFNAR1 (AA353-364) ANTIBODY

**SKU:** EB12096



## SPECIFICATIONS

<b>Formulation</b>	Supplied at 0.5 mg/ml in Tris saline, 0.02% sodium azide, pH7.3 with 0.5% bovine serum albumin.
<b>Unit Size</b>	100 µg
<b>Storage Instructions</b>	Aliquot and store at -20°C. Minimize freezing and thawing.
<b>Synonym / Alias Names</b>	IFNAR1 interferon (alpha, beta and omega) receptor 1 AVP IFN-alpha-REC IFNAR IFNBR IFRC CRF2-1 IFN-R-1 IFN-alpha/beta receptor 1 alpha-type antiviral protein beta-type antiviral protein cytokine receptor class-II member 1 cytokine receptor fa
<b>Accession ID</b>	NP_000620.2
<b>Blocking Peptide</b>	EBP12096
<b>Immunogen</b>	Peptide with sequence C-PKQSGNTPVIQD, from the internal region of the protein sequence according to NP_000620.2.
<b>Peptide Sequence</b>	C-PKQSGNTPVIQD
<b>Purification Method</b>	Purified from goat serum by ammonium sulphate precipitation followed by antigen affinity chromatography using the immunizing peptide.
<b>Shipping Instructions</b>	Refrigerated
<b>Predicted Species</b>	Human
<b>Reactive Species</b>	Human
<b>Human Gene ID</b>	3454
<b>Product Grade</b>	<a href="https://prod-vector-labs-pimcore-assets.s3.us-east-1.amazonaws.com/assets/products/image/elite_medium.png">https://prod-vector-labs-pimcore-assets.s3.us-east-1.amazonaws.com/assets/products/image/elite_medium.png</a>
<b>ELISA Detection Limit</b>	Antibody detection limit dilution 1:128000.
<b>Western Blot</b>	Approx 65kDa band observed in lysates of cell line K562 (calculated MW of 63.5kDa according to NP_000620.2). Recommended concentration: 0.3-1µg/ml.
<b>Application Type</b>	Pep-ELISA, WB

## DOCUMENTS

- [Data Sheet](#)

## GALLERY IMAGES

