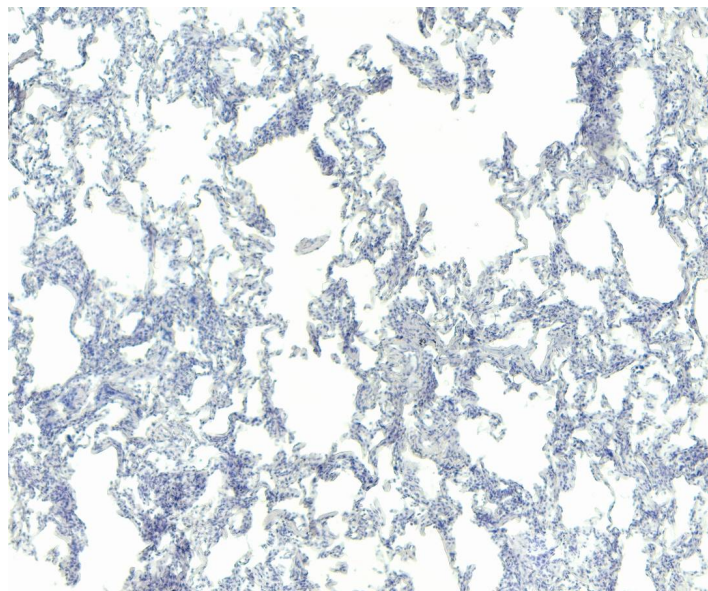


# GOAT ANTI-IFNGR1 (AA181-193) ANTIBODY

**SKU:** EB12101



## SPECIFICATIONS

<b>Formulation</b>	Supplied at 0.5 mg/ml in Tris saline, 0.02% sodium azide, pH7.3 with 0.5% bovine serum albumin.
<b>Unit Size</b>	100 µg
<b>Storage Instructions</b>	Aliquot and store at -20°C. Minimize freezing and thawing.
<b>Synonym / Alias Names</b>	interferon-gamma receptor alpha chain immune interferon receptor 1 antiviral protein, type 2 IFN-gamma-R1 IFN-gamma receptor 1 CDw119 CD119 antigen AVP, type 2 IFNGR CD119 interferon gamma receptor 1 IFNGR1
<b>Usage Summary</b>	<strong>Immunofluorescence:</strong> Strong expression of the protein seen in the membranes of Caco-2 and THP-1 cells. Recommended concentration: 10µg/ml. <strong>Flow Cytometry:</strong> Flow cytometric analysis of K562 cells. Recommended concentration: 10ug/ml.
<b>Accession ID</b>	NP_000407.1; NP_001350455.1; NP_001350456.1
<b>Blocking Peptide</b>	EBP12101
<b>Immunogen</b>	Peptide with sequence C-SEIQYKILTQKED, from the internal region of the protein sequence according to NP_000407.1; NP_001350455.1; NP_001350456.1.
<b>Peptide Sequence</b>	C-SEIQYKILTQKED

<b>Purification Method</b>	Purified from goat serum by ammonium sulphate precipitation followed by antigen affinity chromatography using the immunizing peptide.
<b>Shipping Instructions</b>	Refrigerated
<b>Predicted Species</b>	Human
<b>Reactive Species</b>	Human
<b>Human Gene ID</b>	3459
<b>Product Grade</b>	<a href="https://prod-vector-labs-pimcore-assets.s3.us-east-1.amazonaws.com/assets/products/image/elite_plus_medium.png">https://prod-vector-labs-pimcore-assets.s3.us-east-1.amazonaws.com/assets/products/image/elite_plus_medium.png</a>
<b>IHC Results</b>	Paraffin embedded Human Lung. Recommended concentration: 4-6µg/ml.
<b>ELISA Detection Limit</b>	Antibody detection limit dilution 1:128000.
<b>Western Blot</b>	Approx. 70kDa band observed in lysates of cell lines K562, Caco-2 and HepG2, and approx. 50kDa in Human Spleen lysates (calculated MW of 50.1kDa according to NP_001350456.1). The 70kDa observed molecular weight corresponds to the glycosylated form. Recommended concentration: 1-2µg/ml. Primary incubation 1 hour at room temperature.
<b>Application Type</b>	Pep-ELISA, WB, IF, IHC, FC

## DOCUMENTS

- [Data Sheet](#)

## GALLERY IMAGES

