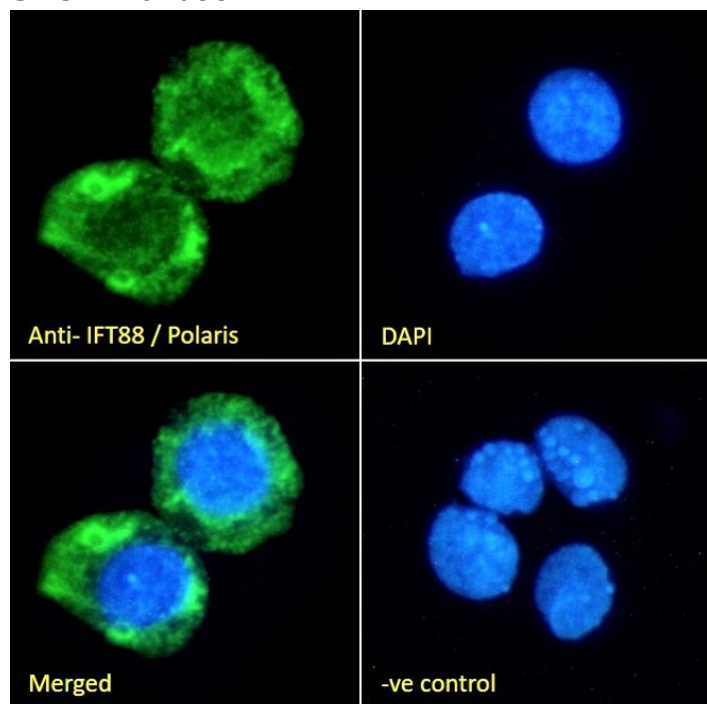


GOAT ANTI-IFT88 / POLARIS ANTIBODY

SKU: EB07088



SPECIFICATIONS

Formulation Supplied at 0.5 mg/ml in Tris saline, 0.02% sodium azide, pH7.3 with 0.5% bovine serum albumin.

Unit Size 100 µg

Storage Instructions Aliquot and store at -20°C. Minimize freezing and thawing.

Synonym / Alias intraflagellar transport 88 homolog (Chlamydomonas)|recessive polycystic kidney disease protein Tg737 homolog|intraflagellar transport 88 homolog|Tg737 protein|Probe hTg737 (polycystic kidney disease, autosomal recessive)|TPR repeat protein

Names 10|hTg737|TG737|RP11-172H24.2|MGC26259|IFT88|DAF19|D13S1056E|HGNC:20606|tetratricopeptide repeat domain 10|TTC10|polaris|IFT88

Usage Summary **Immunofluorescence:** Strong expression of the protein seen in the cytoplasm of A549 and HepG2 cells. Recommended concentration: 10µg/ml. **Flow Cytometry:** Flow cytometric analysis of THP-1 cells. Recommended concentration: 10ug/ml.

Accession ID NP_783195.2; NP_006522.2, NP_001340507.1; NP_001340498.1

Blocking Peptide	EBP07088
Immunogen	Peptide with sequence C-KKRIDEDDFAEDEE, from the C Terminus of the protein sequence according to NP_783195.2; NP_006522.2, NP_001340507.1; NP_001340498.1.
Product Comments	This antibody is expected to recognise many reported isoforms.
Peptide Sequence	C-KKRIDEDDFAEDEE
Purification Method	Purified from goat serum by ammonium sulphate precipitation followed by antigen affinity chromatography using the immunizing peptide.
Shipping Instructions	Refrigerated
Predicted Species	Human, Mouse, Rat, Dog
Reactive Species	Human, Rat
Human Gene ID	8100
Mouse Gene ID	21821
Rat Gene ID	305918
Product Grade	https://prod-vector-labs-pimcore-assets.s3.us-east-1.amazonaws.com/assets/products/image/elite_medium.png
ELISA Detection Limit	Antibody detection limit dilution 1:8000.
Western Blot	Approx. 80kDa band observed in lysates of cell lines THP-1, K562 and KNRK and 85kDa in lysates of cell line U251 (calculated MW of 94.3kDa according to Human NP_783195.2) and 93.1kDa according to Rat XP_006252128.1) . These bands were successfully blocked by incubation with the immunizing peptide. Recommended concentration: 1-3µg/ml. Primary incubation 1 hour at room temperature. <p> A batch specific positive control lysate is available for this product. Please contact Sales@everestbiotech.com for availability.</p>
Application Type	Pep-ELISA, WB, IF, FC

SELECTED REFERENCES

[{"pmid": 19470799, "intro": "**This antibody (previous batch) has been successfully used in IF on Mouse:**", "title": "Pericentrin, a centrosomal protein related to microcephalic primordial dwarfism, is required for olfactory cilia assembly in mice.", "author": "Miyoshi K, Kasahara K, Miyazaki I, Shimizu S, Taniguchi M, Matsuzaki S, Tohyama M, Asanuma M.", "journal": "FASEB J. 2009 Oct;23(10):3289-97."}]

DOCUMENTS

- [Data Sheet](#)

GALLERY IMAGES

