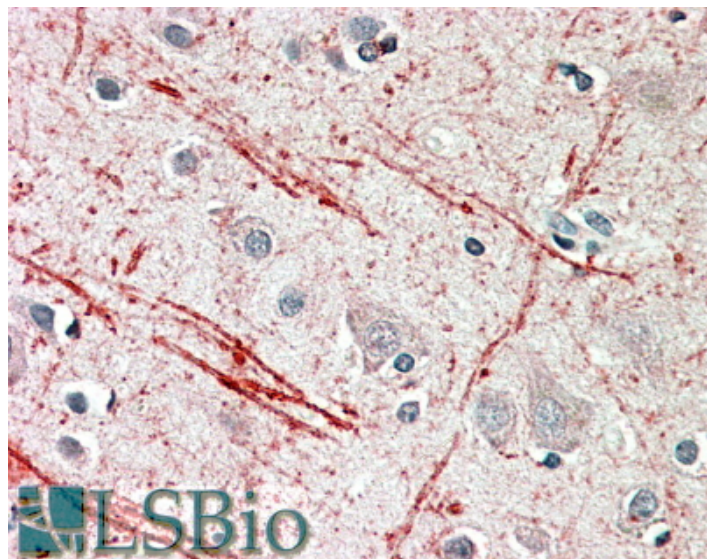


GOAT ANTI-IGF2 (AA81-93) ANTIBODY

SKU: EB11063



SPECIFICATIONS

Formulation	Supplied at 0.5 mg/ml in Tris saline, 0.02% sodium azide, pH7.3 with 0.5% bovine serum albumin.
Unit Size	100 µg
Storage Instructions	Aliquot and store at -20°C. Minimize freezing and thawing.
Synonym / Alias Names	IGF2 somatomedin-A PP9974 OTTHUMP00000220677 insulin-like growth factor type 2 insulin-like growth factor II insulin-like growth factor 2 (somatomedin A) IGF-II FLJ44734 FLJ22066 C11orf43
Accession ID	NP_000603.1; NP_001121070.1
Blocking Peptide	EBP11063
Immunogen	Peptide with sequence ETYCATPAKSERD, from the internal region of the protein sequence according to NP_000603.1; NP_001121070.1.
Product Comments	This antibody is expected to recognize both reported isoforms (NP_000603.1; NP_001121070.1). Reported variants represent identical protein: NP_000603.1, NP_001007140.2
Peptide Sequence	ETYCATPAKSERD
Purification Method	Purified from goat serum by ammonium sulphate precipitation followed by antigen affinity chromatography using the immunizing peptide.

Shipping Instructions	Refrigerated
Predicted Species	Human, Mouse, Rat, Dog, Cow
Reactive Species	Human
Human Gene ID	3481
Mouse Gene ID	16002
Rat Gene ID	24483
Product Grade	https://prod-vector-labs-pimcore-assets.s3.us-east-1.amazonaws.com/assets/products/image/elite_medium.png
IHC Results	In paraffin embedded Human Cortex shows axonal staining. Recommended concentration: 5-10µg/ml.
ELISA	
Detection Limit	Antibody detection limit dilution 1:64000.
Application Type	Pep-ELISA, IHC

DOCUMENTS

- [Data Sheet](#)

GALLERY IMAGES

