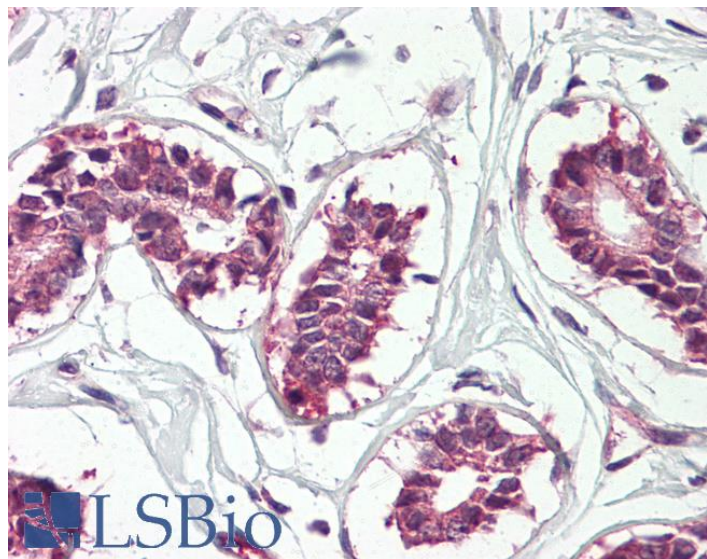


GOAT ANTI-IGF2BP1/IMP1 ANTIBODY

SKU: EB10067



SPECIFICATIONS

Formulation	Supplied at 0.5 mg/ml in Tris saline, 0.02% sodium azide, pH7.3 with 0.5% bovine serum albumin.
Unit Size	100 µg
Storage Instructions	Aliquot and store at -20°C. Minimize freezing and thawing.
Synonym / Alias Names	IGF2BP1 zipcode-binding protein 1 ZBP1 VICKZ1 VICKZ family member 1 insulin-like growth factor 2 mRNA binding protein 1 IMP-1 IMP1 IGF2 mRNA-binding protein 1 IGF II mRNA binding protein 1 CRD-BP CRDBP coding region determinant-binding protein
Usage Summary	<p>Immunofluorescence: Strong expression of the protein seen in HepG2 and NIH3T3 cells.</p> <p>Flow Cytometry: Flow cytometric analysis of HepG2 cells. Recommended concentration: 10ug/ml.</p>
Accession ID	NP_006537.3; NP_001153895.1
Blocking Peptide	EBP10067
Immunogen	Peptide with sequence C-EKVFAEHKISYSGQ, from the internal region of the protein sequence according to NP_006537.3; NP_001153895.1.
Product Comments	This antibody is expected to recognize both reported isoforms (NP_006537.3; NP_001153895.1).
Peptide Sequence	C-EKVFAEHKISYSGQ

Purification Method	Purified from goat serum by ammonium sulphate precipitation followed by antigen affinity chromatography using the immunizing peptide.
Shipping Instructions	Refrigerated
Predicted Species	Human, Mouse, Rat, Dog, Cow
Reactive Species	Human, Mouse
Human Gene ID	10642
Mouse Gene ID	140486
Rat Gene ID	303477
Product Grade	https://prod-vector-labs-pimcore-assets.s3.us-east-1.amazonaws.com/assets/products/image/elite_plus_medium.png
IHC Results	Paraffin embedded Human Breast. Recommended concentration: 3.75µg/ml.
ELISA	
Detection Limit	Antibody detection limit dilution 1:16000. Approx 65kDa band observed in lysates of cell line Caco-2 and approx. 70kDa in lysates of cell line K562 and in nuclear cell lysates of HepG2 and NIH3T3 (calculated MW of 63.5kDa according to Human NP_006537.3 and Mouse NP_034081.1). Recommended concentration: 0.1-1µg/ml. Primary incubation 1 hour at room temperature.
Western Blot	Positive Control: A batch specific positive control lysate is available for this product. Please contact Sales@everestbiotech.com for availability.
Application Type	Pep-ELISA, WB, IHC, IF, FC

DOCUMENTS

- [Data Sheet](#)

GALLERY IMAGES

