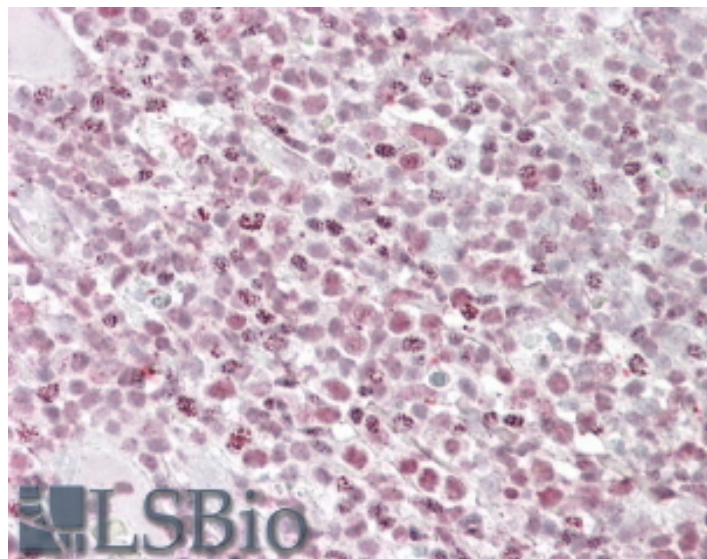


GOAT ANTI-IKAROS / IKZF1 ANTIBODY

SKU: EB09708



SPECIFICATIONS

Formulation	Supplied at 0.5 mg/ml in Tris saline, 0.02% sodium azide, pH7.3 with 0.5% bovine serum albumin.
Unit Size	100 µg
Storage Instructions	Aliquot and store at -20°C. Minimize freezing and thawing.
Synonym / Alias Names	lymphoid transcription factor LyF-1 zinc finger protein, subfamily 1A, 1 (Ikaros) Ikaros (zinc finger protein) CLL-associated antigen KW-6 hIk-1 ZNFN1A1 PRO0758 LYF1 IKAROS IK1 Hs.54452 IKAROS family zinc finger 1 (Ikaros) IKZF1
Accession ID	NP_006051.1; NP_001278766.1;NP_001278767.1;NP_001207696.1;NP_001207697.1; NP_001278768.1; NP_001207699.1; NP_001207700.1
Blocking Peptide	EBP09708
Immunogen	Peptide with sequence C-DTPYDSSASYEKEN, from the internal region of the protein sequence according to NP_006051.1; NP_001278766.1;NP_001278767.1;NP_001207696.1;NP_001207697.1; NP_001278768.1; NP_001207699.1; NP_001207700.1.
Product Comments	This antibody is expected to recognise all isoforms NP_001278766.1;NP_001278767.1;NP_001207696.1;NP_001207697.1; NP_001278768.1; NP_001207699.1; NP_001207700.1
Peptide Sequence	C-DTPYDSSASYEKEN

Purification Method	Purified from goat serum by ammonium sulphate precipitation followed by antigen affinity chromatography using the immunizing peptide.
Shipping Instructions	Refrigerated
Predicted Species	Human, Dog, Cow
Reactive Species	Human
Human Gene ID	10320
Product Grade	https://prod-vector-labs-pimcore-assets.s3.us-east-1.amazonaws.com/assets/products/image/elite_medium.png
IHC Results	In paraffin embedded Human Tonsil shows textured staining in some nuclei of the lymphoid tissue. Recommended concentration: 2.5-3.8µg/ml.
ELISA Detection Limit	Antibody detection limit dilution 1:1000.
Western Blot	Preliminary testing showed a band at approx. 60kDa in Human Lymph node and Peripheral Blood Monocyte lysate, after 1ug/ml antibody staining (calculated MW of 57.5kDa according to NP_006051.1). Primary incubation 1 hour at room temperature.
Application Type	Pep-ELISA, IHC

DOCUMENTS

- [Data Sheet](#)

GALLERY IMAGES

