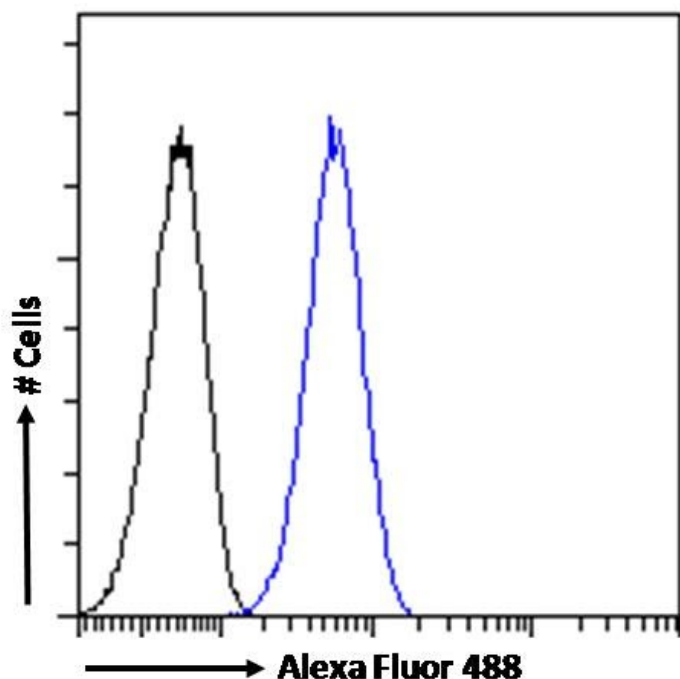


GOAT ANTI-IKZF4 ANTIBODY

SKU: EB09810



SPECIFICATIONS

Formulation Supplied at 0.5 mg/ml in Tris saline, 0.02% sodium azide, pH7.3 with 0.5% bovine serum albumin.

Unit Size 100 µg

Storage Instructions Aliquot and store at -20°C. Minimize freezing and thawing.

Synonym / Alias Names IKZF4|ZNFN1A4|zinc finger transcription factor Eos|zinc finger protein, subfamily 1A, 4 (Eos)|zinc finger protein, subfamily 1A, 4|KIAA1782|IKAROS family zinc finger 4 (Eos)|EOS

Usage Summary **Immunofluorescence:** Strong expression of the protein seen in the nuclei of U2OS and HeLa cells. Recommended concentration: (5)µg/ml. **Flow Cytometry:** Flow cytometric analysis of HepG2 cells. Recommended concentration: 10ug/ml.

Accession ID NP_071910.3; NP_001338019.1; NP_001338020.1; NP_001338021.1

Blocking Peptide EBP09810

Immunogen Peptide with sequence C-RPTFIDRLANSLTKR, from the internal region of the protein sequence according to NP_071910.3; NP_001338019.1; NP_001338020.1; NP_001338021.1.

Product	This antibody is expected to recognise reported isoforms NP_071910.3; NP_001338019.1; NP_001338020.1;
Comments	NP_001338021.1
Peptide Sequence	C-RPTFIDRLANSLTKR
Purification Method	Purified from goat serum by ammonium sulphate precipitation followed by antigen affinity chromatography using the immunizing peptide.
Shipping Instructions	Refrigerated
Predicted Species	Human, Mouse, Dog, Cow
Reactive Species	Human, Mouse
Human Gene ID	64375
Mouse Gene ID	22781
Product Grade	https://prod-vector-labs-pimcore-assets.s3.us-east-1.amazonaws.com/assets/products/image/elite_plus_medium.png
ELISA Detection Limit	Antibody detection limit dilution 1:2000.
Western Blot	Approx 60kDa band observed in nuclear lysates of cell line Jurkat, approx.. 60+70kDa in nuclear lysates of cell line K562, and approx. 55kDa in Mouse Heart lysates (calculated MW of 64.1kDa according to Human NP_071910.3, 59.1kDa Human NP_001338019.1, and 58.1kDa according to Mouse NP_001345465.1). All bands were successfully blocked by incubation with the immunising peptide. Recommended concentration: 0.1-2µg/ml. Primary incubation 1 hour at room temperature.
Application Type	Pep-ELISA, WB, IF, FC

DOCUMENTS

- [Data Sheet](#)

GALLERY IMAGES

