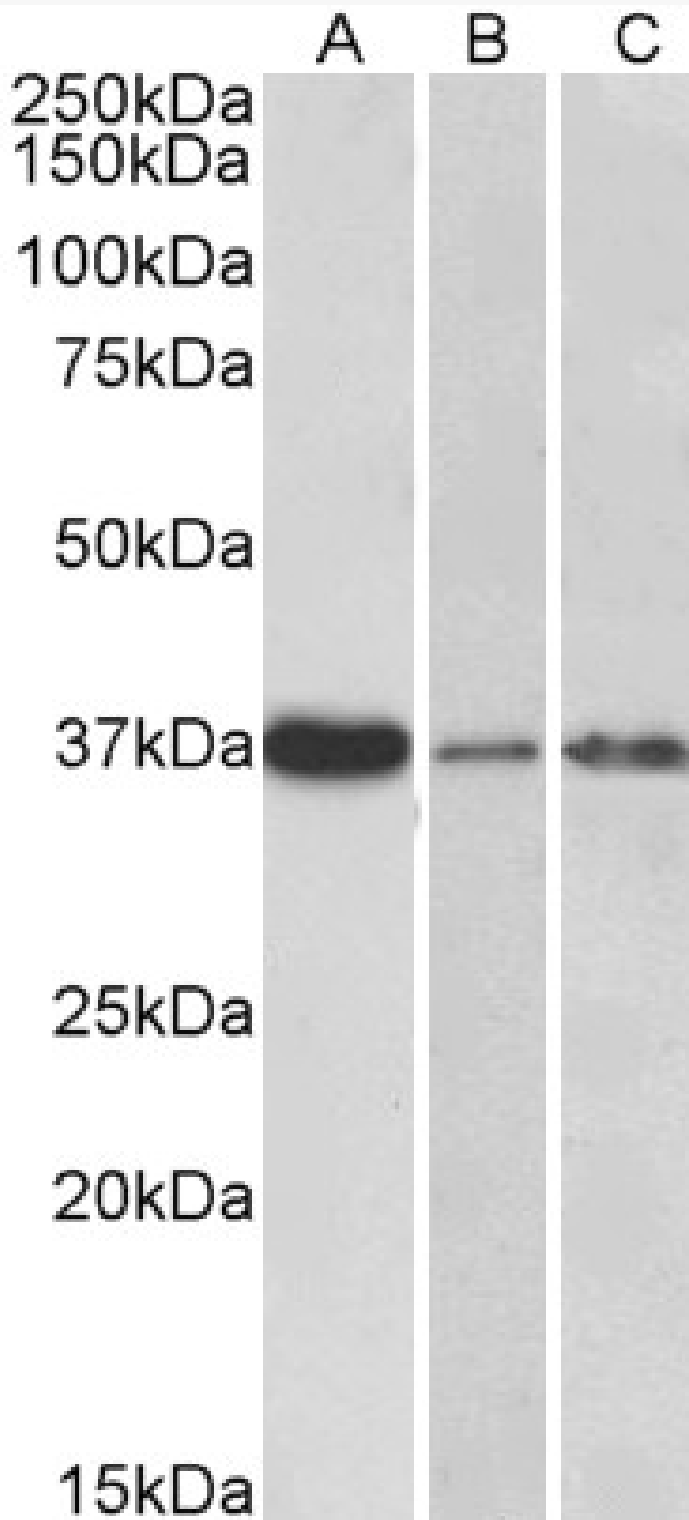


GOAT ANTI-IL12B / IL12P40 ANTIBODY

SKU: EB07862



SPECIFICATIONS

Formulation	Supplied at 0.5 mg/ml in Tris saline, 0.02% sodium azide, pH7.3 with 0.5% bovine serum albumin.
Unit Size	100 µg
Storage	Aliquot and store at -20°C. Minimize freezing and thawing.
Instructions	
Synonym / Alias Names	natural killer cell stimulatory factor-2 natural killer cell stimulatory factor, 40 kD subunit interleukin-12 beta chain interleukin 12B interleukin 12, p40 cytotoxic lymphocyte maturation factor 2, p40 subunit p40 IL12 NKSF2 NKSF IL-12B CLMF2 CLMF interleukin 12B (natural killer cell stimulatory factor 2, cytotoxic lymphocyte maturation factor 2, p40) IL12B
Accession ID	NP_002178.2
Blocking Peptide	EBP07862
Immunogen	Peptide with sequence C-QGKSKREKKDRVFTD, from the internal region of the protein sequence according to NP_002178.2.
Peptide Sequence	C-QGKSKREKKDRVFTD
Purification Method	Purified from goat serum by ammonium sulphate precipitation followed by antigen affinity chromatography using the immunizing peptide.
Shipping Instructions	Refrigerated
Predicted Species	Human
Reactive Species	Human
Human Gene ID	3593
Product Grade	https://prod-vector-labs-pimcore-assets.s3.us-east-1.amazonaws.com/assets/products/image/elite_medium.png
ELISA Detection Limit	Antibody detection limit dilution 1:128000.
Western Blot	Approx 37kDa band observed in Human Liver, Skin and Tonsil lysates (calculated MW of 37.2kDa according to NP_002178.2). Recommended concentration: 0.3-1µg/ml. Primary incubation was 1 hour.
Application Type	Pep-ELISA, WB

DOCUMENTS

- [Data Sheet](#)

GALLERY IMAGES

