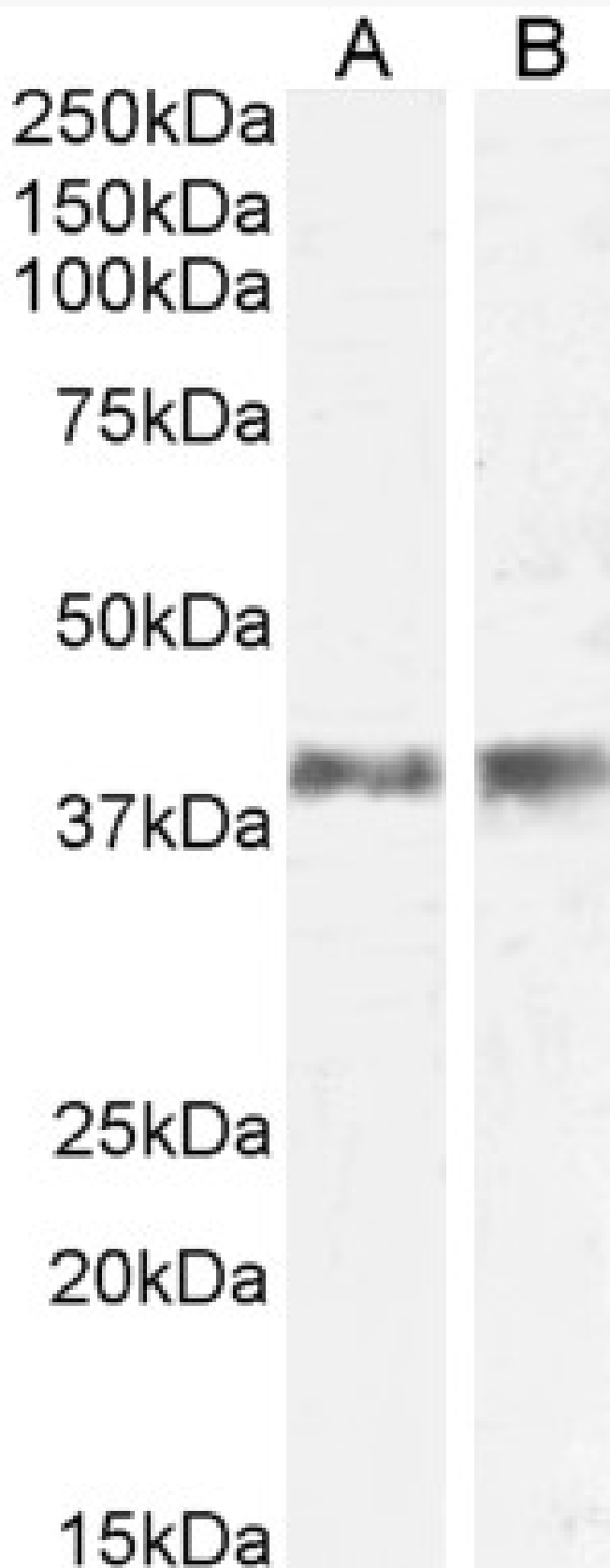


GOAT ANTI-IL12B / IL12P40 (MOUSE) ANTIBODY

SKU: EB07863



SPECIFICATIONS

Formulation	Supplied at 0.5 mg/ml in Tris saline, 0.02% sodium azide, pH7.3 with 0.5% bovine serum albumin.
Unit Size	100 µg
Storage Instructions	Aliquot and store at -20°C. Minimize freezing and thawing.
Synonym / Alias Names	IL-23 subunit p40 IL-12 p40 p40 IL-12p40 IL-12b RP23-388G23.1 interleukin 12B IL12p40 IL12B
Accession ID	NP_032378.1
Blocking Peptide	EBP07863
Immunogen	Peptide with sequence C-EARQQNKYENYS, from the internal region of the protein sequence according to NP_032378.1.
Peptide Sequence	C-EARQQNKYENYS
Purification Method	Purified from goat serum by ammonium sulphate precipitation followed by antigen affinity chromatography using the immunizing peptide.
Shipping Instructions	Refrigerated
Predicted Species	Mouse, Rat
Reactive Species	Mouse, Rat
Mouse Gene ID	16160
Rat Gene ID	64546
Product Grade	https://prod-vector-labs-pimcore-assets.s3.us-east-1.amazonaws.com/assets/products/image/elite_medium.png
ELISA Detection Limit	Antibody detection limit dilution 1:16000.
Western Blot	Approx 38kDa band observed in Mouse and Rat Skin lysates (calculated MW of 38.2kDa according to Mouse NP_032378.1 and 38.4kDa according to Rat NP_072133.1). Recommended concentration: 0.3-1µg/ml. Primary incubation was 1 hour.
Application Type	Pep-ELISA, WB

SELECTED REFERENCES

[{"pmid": 22229306, "intro": "**This antibody (previous batch) has been successfully used**"}]

in WB and IHC in Rat:", "title": "Effects of acupuncture on LIF and IL-12 in rats of implantation failure.", "author": "Gui J, Xiong F, Yang W, Li J, Huang G.", "journal": "Am J Reprod Immunol. 2012 May;67(5):383-90. doi: 10.1111/j.1600-0897.2011.01097.x."}]

DOCUMENTS

- [Data Sheet](#)

GALLERY IMAGES

