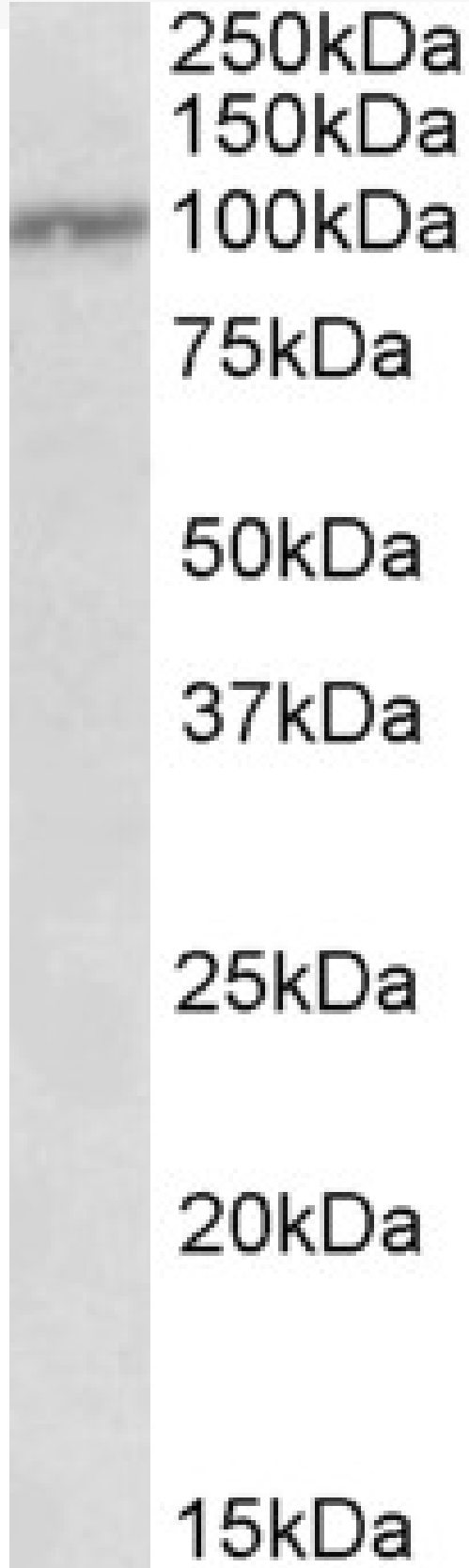


GOAT ANTI-IL12RB1 ANTIBODY

SKU: EB10083



SPECIFICATIONS

Formulation	Supplied at 0.5 mg/ml in Tris saline, 0.02% sodium azide, pH7.3 with 0.5% bovine serum albumin.
Unit Size	100 µg
Storage Instructions	Aliquot and store at -20°C. Minimize freezing and thawing.
Synonym / Alias Names	CD212 IL-12 receptor beta component IL12RB IL-12R-BETA1 interleukin 12 receptor, beta 1 interleukin-12 receptor beta-1 chain MGC34454 IL12RB1
Accession ID	NP_005526.1
Blocking Peptide	EBP10083
Immunogen	Peptide with sequence C-HVSVKNHSLDSVS, from the internal region of the protein sequence according to NP_005526.1.
Product Comments	This antibody is expected to recognize isoform 1 (NP_005526.1) only.
Peptide Sequence	C-HVSVKNHSLDSVS
Purification Method	Purified from goat serum by ammonium sulphate precipitation followed by antigen affinity chromatography using the immunizing peptide.
Shipping Instructions	Refrigerated
Predicted Species	Human
Reactive Species	Human
Human Gene ID	3594
Product Grade	https://prod-vector-labs-pimcore-assets.s3.us-east-1.amazonaws.com/assets/products/image/elite_medium.png
ELISA Detection Limit	Antibody detection limit dilution 1:8000.
Western Blot	Approx 100kDa band observed in Human Peripheral Blood Mononucleocytes lysates (calculated MW of 73.1kDa according to NP_005526.1). The observed molecular weight corresponds to the glycosylated form. Recommended concentration: 0.3-1µg/ml.
Application Type	Pep-ELISA, WB

DOCUMENTS

- [Data Sheet](#)

GALLERY IMAGES

