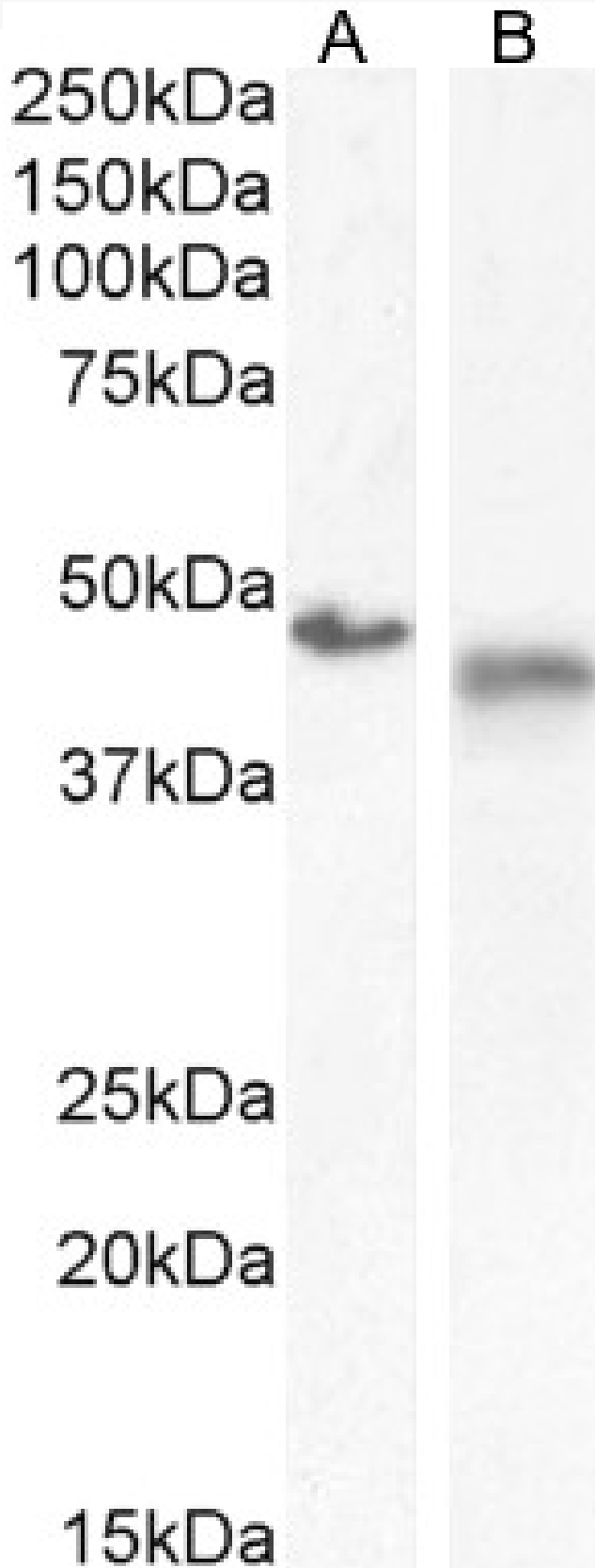


GOAT ANTI-IL1R2 ANTIBODY

SKU: EB10107



SPECIFICATIONS

Formulation	Supplied at 0.5 mg/ml in Tris saline, 0.02% sodium azide, pH7.3 with 0.5% bovine serum albumin.
Unit Size	100 µg
Storage Instructions	Aliquot and store at -20°C. Minimize freezing and thawing.
Synonym / Alias Names	IL1R2 type II interleukin-1 receptor, beta MGC47725 interleukin 1 receptor, type II IL1RB CD121b antigen CDw121b
Usage Summary	<p>Immunofluorescence: Strong expression of the protein seen in the membranes and cytoplasm of A549 cells. Recommended concentration: 10µg/ml.</p> <p>Flow Cytometry: Flow cytometric analysis of A549 cells. Recommended concentration: 10ug/ml.</p>
Accession ID	NP_004624.1; NP_001248348.1
Blocking Peptide	EBP10107
Immunogen	Peptide with sequence C-QYNITRSIELRIKK, from the internal region of the protein sequence according to NP_004624.1; NP_001248348.1.
Product Comments	This antibody is expected to cross-react with both reported isoforms (NP_004624.1; NP_001248348.1). Reported variants represent identical protein: NP_775465.1, NP_004624.1
Peptide Sequence	C-QYNITRSIELRIKK
Purification Method	Purified from goat serum by ammonium sulphate precipitation followed by antigen affinity chromatography using the immunizing peptide.
Shipping Instructions	Refrigerated
Predicted Species	Human
Reactive Species	Human
Human Gene ID	7850
Product Grade	https://prod-vector-labs-pimcore-assets.s3.us-east-1.amazonaws.com/assets/products/image/elite_plus_medium.png
ELISA Detection Limit	Antibody detection limit dilution 1:16000.
Western Blot	Approx 45kDa band observed in lysates of cell lines LNCaP and MOLT-4 (calculated MW o 45.4kDa according to NP_004624.1). Recommended concentration:0.3-1µg/ml. Primary incubation 1 hour at room temperature.
Application Type	Pep-ELISA, WB, IF, FC

DOCUMENTS

- [Data Sheet](#)

GALLERY IMAGES

