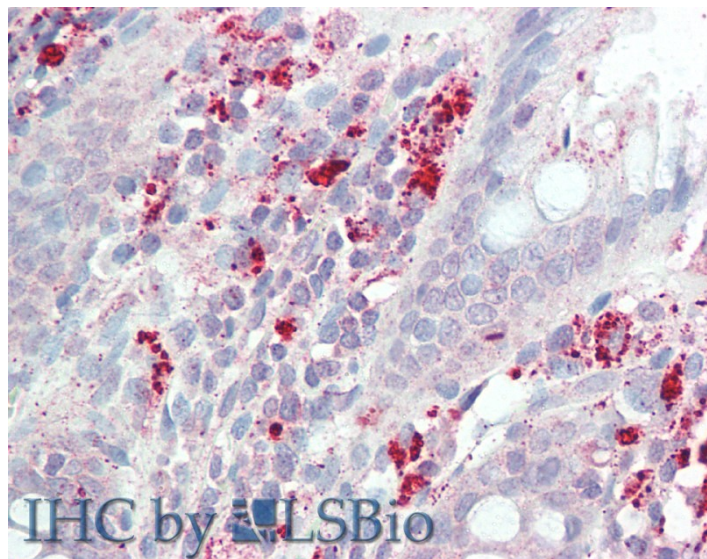


GOAT ANTI-IL3RA / CD123 ANTIBODY

SKU: EB12522



SPECIFICATIONS

Formulation Supplied at 0.5 mg/ml in Tris saline, 0.02% sodium azide, pH7.3 with 0.5% bovine serum albumin.

Unit Size 100 µg

Storage Instructions Aliquot and store at -20°C. Minimize freezing and thawing.

Synonym / Alias Names interleukin-3 receptor subunit alpha|IL-3RA|IL-3R-alpha|IL-3R subunit alpha|IL-3 receptor subunit alpha|IL-3 receptor alpha SP2 isoform|CD123 antigen|hIL-3Ra|IL3RY|IL3RX|IL3RAY|IL3R|CD123|interleukin 3 receptor, alpha (low affinity)|IL3RA

Accession ID NP_002174.1; NP_001254642.1

Blocking Peptide EBP12522

Immunogen Peptide with sequence RQQYECLHYKTD, from the internal region of the protein sequence according to NP_002174.1; NP_001254642.1.

Product Comments This antibody is expected to recognize both reported isoforms (NP_002174.1; NP_001254642.1).

Peptide Sequence RQQYECLHYKTD

Purification Method Purified from goat serum by ammonium sulphate precipitation followed by antigen affinity chromatography using the immunizing peptide.

Shipping Instructions	Refrigerated
Predicted Species	Human
Reactive Species	Human
Human Gene ID	3563
Product Grade	https://prod-vector-labs-pimcore-assets.s3.us-east-1.amazonaws.com/assets/products/image/elite_medium.png
IHC Results	Paraffin embedded Human Colon. Recommended concentration: 5µg/ml.
ELISA	
Detection Limit	Antibody detection limit dilution 1:128000.
Western Blot	Approx 43kDa band observed in lysates of cell lines Jurkat and Molt4 (calculated MW of 43.3kDa according to NP_002174.1). Recommended concentration: 1-3µg/ml. Primary incubation was 1 hour.
Application Type	Pep-ELISA, WB, IHC

DOCUMENTS

- [Data Sheet](#)

GALLERY IMAGES

