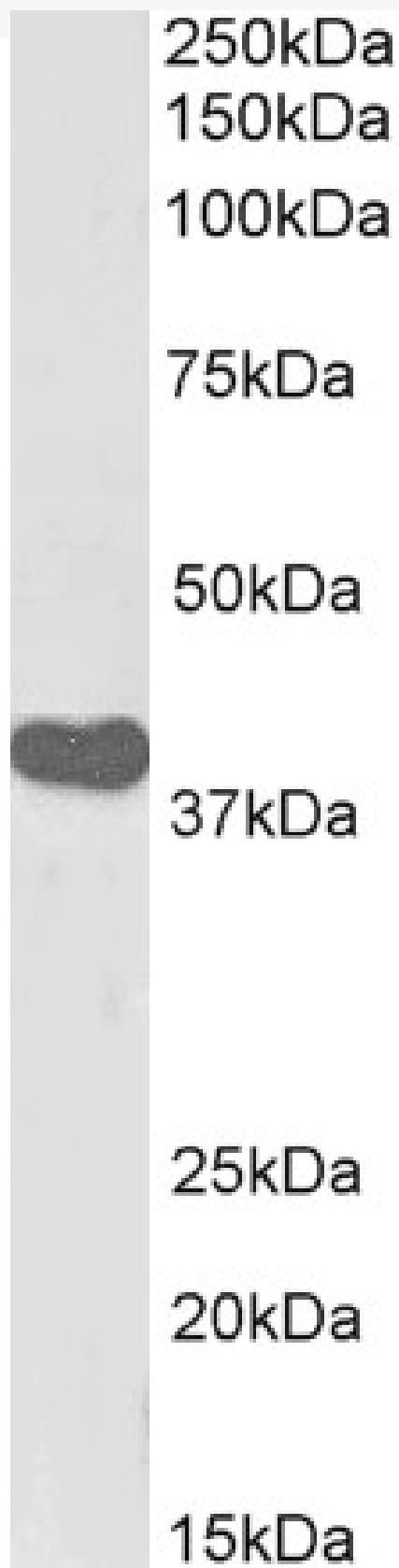


# GOAT ANTI-ILF2 / NF45, BIOTINYLATED ANTIBODY

**SKU:** EB07784-B



## SPECIFICATIONS

<b>Formulation</b>	Supplied at 0.5 mg/ml in Tris saline, 0.02% sodium azide, pH7.3 with 0.5% bovine serum albumin.
<b>Unit Size</b>	100 µg
<b>Storage Instructions</b>	Aliquot and store at -20°C. Minimize freezing and thawing.
<b>Synonym / Alias Names</b>	nuclear factor of activated T-cells, 45-kDa interleukin enhancer binding factor 2, 45kDa PRO3063 NF45 interleukin enhancer binding factor 2 ILF2
<b>Accession ID</b>	NP_004506.2; NP_001254738.1
<b>Blocking Peptide</b>	EBP07784-B
<b>Immunogen</b>	Peptide with sequence C-EKAYEKPPEKKEG., from the internal region (near the C Terminus) of the protein sequence according to NP_004506.2; NP_001254738.1.
<b>Product Comments</b>	This antibody is expected to recognize both reported isoforms (NP_004506.2; NP_001254738.1).
<b>Peptide Sequence</b>	C-EKAYEKPPEKKEG.
<b>Purification Method</b>	Purified from goat serum by ammonium sulphate precipitation followed by antigen affinity chromatography using the immunizing peptide.
<b>Shipping Instructions</b>	Refrigerated
<b>Predicted Species</b>	Human, Mouse, Rat, Dog
<b>Reactive Species</b>	Human
<b>Human Gene ID</b>	3608
<b>Mouse Gene ID</b>	67781
<b>Rat Gene ID</b>	310612
<b>Product Grade</b>	<a href="https://prod-vector-labs-pimcore-assets.s3.us-east-1.amazonaws.com/assets/products/image/elite_medium.png">https://prod-vector-labs-pimcore-assets.s3.us-east-1.amazonaws.com/assets/products/image/elite_medium.png</a>
<b>ELISA Detection Limit</b>	Antibody detection limit dilution 1:16000.
<b>Western Blot</b>	Approx 43kDa band observed in Human Tonsil lysates (calculated MW of 43.1kDa according to NP_004506.2). See non-biotinylated parental product's datasheet for further QC data. Recommended concentration: 0.1-0.3µg/ml.
<b>Application Type</b>	Pep-ELISA, WB

## DOCUMENTS

- [Data Sheet](#)

## GALLERY IMAGES

