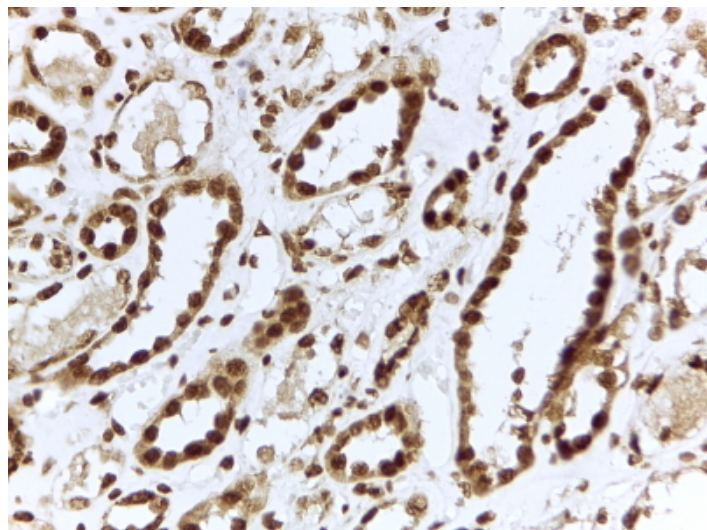


GOAT ANTI-ILF3 ANTIBODY

SKU: EB09502



SPECIFICATIONS

Formulation	Supplied at 0.5 mg/ml in Tris saline, 0.02% sodium azide, pH7.3 with 0.5% bovine serum albumin.
Unit Size	100 µg
Storage Instructions	Aliquot and store at -20°C. Minimize freezing and thawing.
Synonym / Alias Names	ILF3 interleukin enhancer binding factor 3, 90kDa DRBF MMP4 MPHOSPH4 MPP4 NF-AT-90 NF90 NFAR TCP80 M-phase phosphoprotein 4 dsRNA binding protein NFAR-2/MPP4 interleukin enhancer binding factor 3 nuclear factor associated with dsRNA nuclear factor of activated T-cells, 90 kD translational control protein 80
Accession ID	NP_036350.2; NP_060090.2
Blocking Peptide	EBP09502
Immunogen	Peptide with sequence C-QKPSYSGYQSHQGQ, from the internal region of the protein sequence according to NP_036350.2; NP_060090.2.
Product Comments	This antibody is expected to recognize isoforms a (NP_036350.2) and d (NP_060090.2).
Peptide Sequence	C-QKPSYSGYQSHQGQ
Purification Method	Purified from goat serum by ammonium sulphate precipitation followed by antigen affinity chromatography using the immunizing peptide.

Shipping Instructions	Refrigerated
Predicted Species	Human, Rat, Dog, Cow
Reactive Species	Human
Human Gene ID	3609
Product Grade	https://prod-vector-labs-pimcore-assets.s3.us-east-1.amazonaws.com/assets/products/image/elite_medium.png
IHC Results	In paraffin embedded Human Kidney shows nuclear staining in convoluted tubules. Recommended concentration, 2-4µg/ml.
ELISA	
Detection Limit	Antibody detection limit dilution 1:32000.
Application Type	Pep-ELISA, IHC

DOCUMENTS

- [Data Sheet](#)

GALLERY IMAGES

