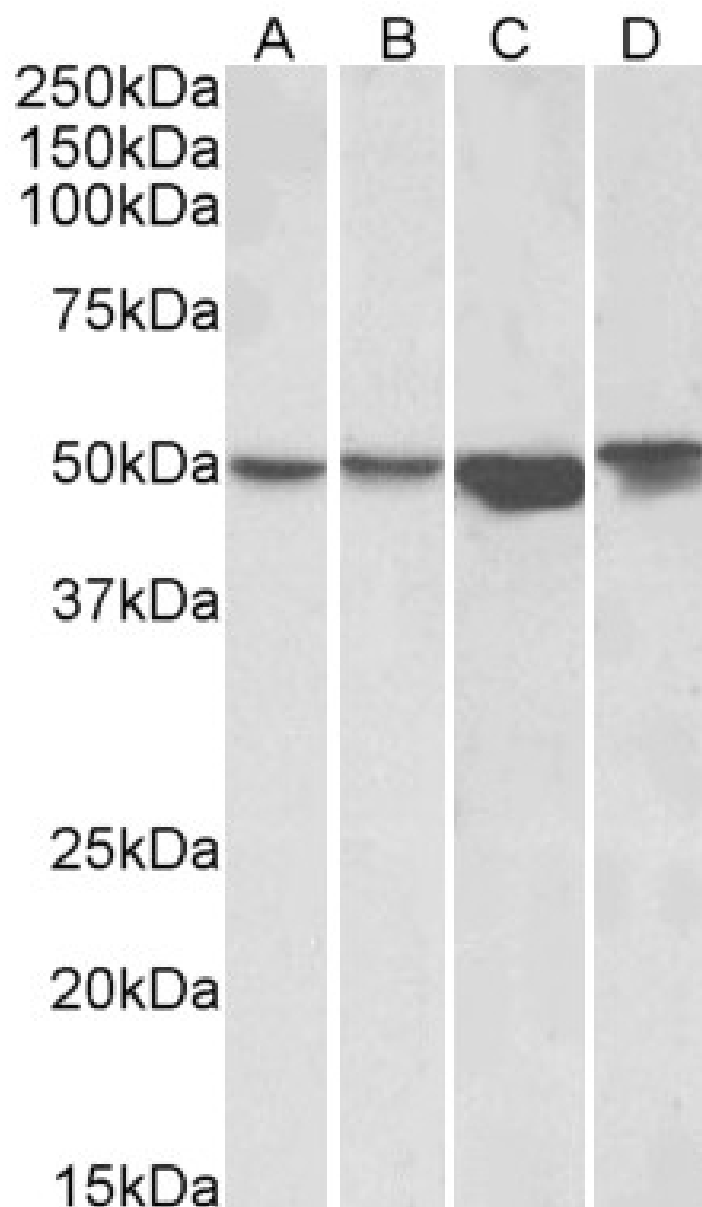


GOAT ANTI-ILK ANTIBODY

SKU: EB05120



SPECIFICATIONS

Formulation	Supplied at 0.5 mg/ml in Tris saline, 0.02% sodium azide, pH7.3 with 0.5% bovine serum albumin.
Unit Size	100 µg
Storage	
Instructions	Aliquot and store at -20°C. Minimize freezing and thawing.
Synonym / Alias Names	ILK integrin-linked kinase P59 DKFZp686F1765 ILK-2 59 kDa serine/threonine-protein kinase ILK-1 integrin-linked kinase-2 integrin-linked protein kinase p59ILK
Accession ID	NP_004508.1; NP_001014794.1; NP_001014795.1
Blocking Peptide	EBP05120
Immunogen	Peptide with sequence C-DMIVPILEKMQDK, from the C Terminus of the protein sequence according to NP_004508.1; NP_001014794.1; NP_001014795.1.
Product Comments	All 3 variants (represented by NP_004508.1; NP_001014794.1 and NP_001014795.1) encode the same protein.
Peptide Sequence	C-DMIVPILEKMQDK
Purification Method	Purified from goat serum by ammonium sulphate precipitation followed by antigen affinity chromatography using the immunizing peptide.
Shipping Instructions	Refrigerated
Predicted Species	Human, Mouse, Rat, Dog, Cow
Reactive Species	Human, Mouse
Human Gene ID	3611
Product Grade	https://prod-vector-labs-pimcore-assets.s3.us-east-1.amazonaws.com/assets/products/image/elite_medium.png
ELISA Detection Limit	Antibody detection limit dilution 1:32000.
Western Blot	Approx 52kDa band observed in Mouse Kidney lysates and in lysates of cell line NIH3T3 and 50-51kDa in HEK293, A431, HeLa and Jurkat lysates (calculated MW of 51.4kDa according to Human NP_004508.1 and Mouse NP_034692.2). Recommended concentration: 0.5-2µg/ml.
Application Type	Pep-ELISA, WB

DOCUMENTS

- [Data Sheet](#)

GALLERY IMAGES

