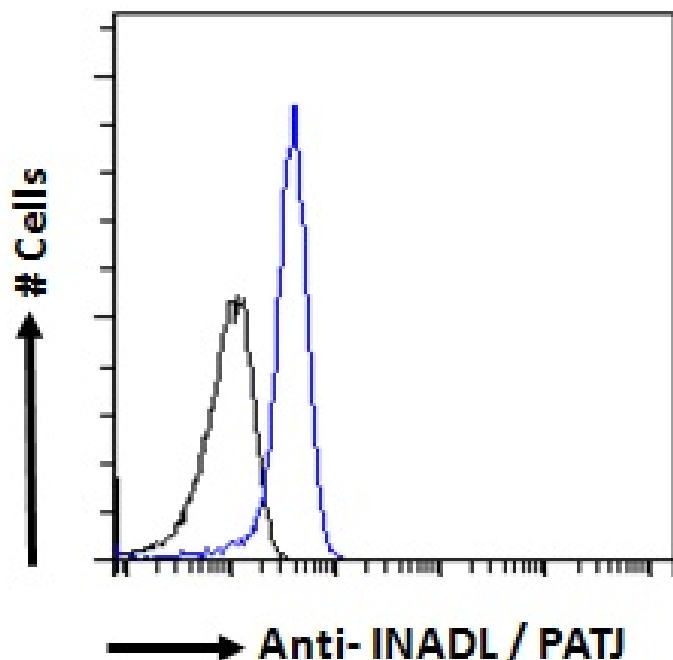


GOAT ANTI-INADL / PATJ ANTIBODY

SKU: EB06197



SPECIFICATIONS

Formulation Supplied at 0.5 mg/ml in Tris saline, 0.02% sodium azide, pH7.3 with 0.5% bovine serum albumin.

Unit Size 100 µg

Storage Instructions Aliquot and store at -20°C. Minimize freezing and thawing.

Synonym / Alias Names inactivation no after-potential D-like protein|channel-interacting PDZ domain protein|PDZ domain protein|PALS1-associated tight junction protein|InaD-like|InaD-like|FLJ26982|Cipp|RP4-537K17.1|InaD-like (Drosophila)|protein associated to tight junctions|PDZ domain protein (Drosophila inaD-like)|PATJ|INADL

Usage Summary **Immunofluorescence:** Strong expression of the protein seen in A431 cells. Recommended concentration: 10µg/ml. **Flow Cytometry:** Flow cytometric analysis of A431 cells. Recommended concentration: 10ug/ml.

Accession ID NP_795352.2; NP_001337074.1

Blocking Peptide EBP06197

| | |
|------------------------------|---|
| Immunogen | Peptide with sequence PENPATDKLQVLQ-C, from the N Terminus of the protein sequence according to NP_795352.2; NP_001337074.1. |
| Peptide Sequence | PENPATDKLQVLQ-C |
| Purification Method | Purified from goat serum by ammonium sulphate precipitation followed by antigen affinity chromatography using the immunizing peptide. |
| Shipping Instructions | Refrigerated |
| Predicted Species | Human, Dog, Pig, Cow |
| Reactive Species | Human |
| Human Gene ID | 10207 |
| Product Grade | https://prod-vector-labs-pimcore-assets.s3.us-east-1.amazonaws.com/assets/products/image/elite_medium.png |
| ELISA Detection Limit | Antibody detection limit dilution 1:64000. |
| Application Type | Pep-ELISA, IF, FC |

DOCUMENTS

- [Data Sheet](#)

GALLERY IMAGES

