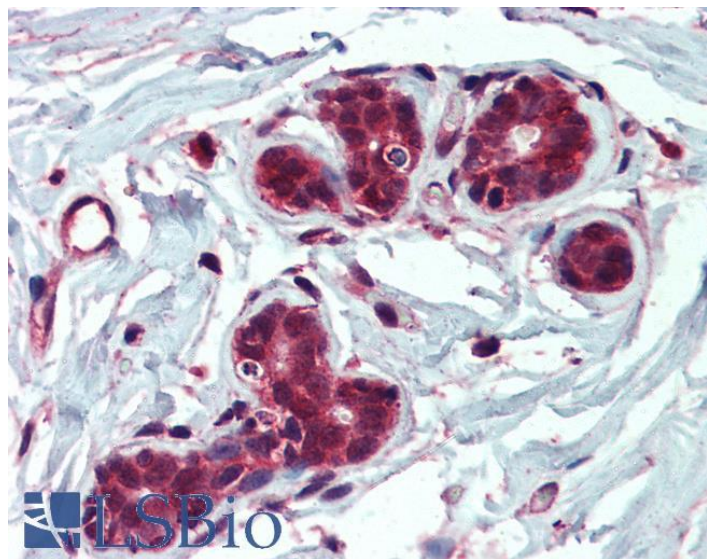


GOAT ANTI-INSULYSIN / INSULINASE ANTIBODY

SKU: EB07898



SPECIFICATIONS

Formulation	Supplied at 0.5 mg/ml in Tris saline, 0.02% sodium azide, pH7.3 with 0.5% bovine serum albumin.
Unit Size	100 µg
Storage Instructions	Aliquot and store at -20°C. Minimize freezing and thawing.
Synonym / Alias Names	insulinase insulysin insulin-degrading enzyme FLJ35968 INSULYSIN IDE
Accession ID	NP_004960.2; NP_001159418.1; NP_001309722.1; NP_001309723.1; NP_001309724.1; NP_001309726.1
Blocking Peptide	EBP07898
Immunogen	Peptide with sequence C-QQYNFDRDNT, from the internal region of the protein sequence according to NP_004960.2; NP_001159418.1; NP_001309722.1; NP_001309723.1; NP_001309724.1; NP_001309726.1.
Product Comments	This antibody is expected to recognize all reported isoforms (NP_004960.2; NP_001159418.1; NP_001309722.1; NP_001309723.1; NP_001309724.1; NP_001309726.1). Reported variants represent identical protein: NP_001309725.1, NP_001309724.1
Peptide Sequence	C-QQYNFDRDNT

Purification Method	Purified from goat serum by ammonium sulphate precipitation followed by antigen affinity chromatography using the immunizing peptide.
Shipping Instructions	Refrigerated
Predicted Species	Human, Dog
Reactive Species	Human
Human Gene ID	3416
Product Grade	https://prod-vector-labs-pimcore-assets.s3.us-east-1.amazonaws.com/assets/products/image/elite_medium.png
IHC Results	Paraffin embedded Human Lung and Breast. Recommended concentration: 2.5µg/ml.
ELISA Detection Limit	Antibody detection limit dilution 1:32000.
Western Blot	Approx 110-120kDa band observed in lysates of cell line K562 (calculated MW of 118kDa according to NP_004960.1). Recommended concentration: 0.1-0.3µg/ml. Primary incubation was 1 hour.
Application Type	Pep-ELISA, WB, IHC

DOCUMENTS

- [Data Sheet](#)

GALLERY IMAGES

