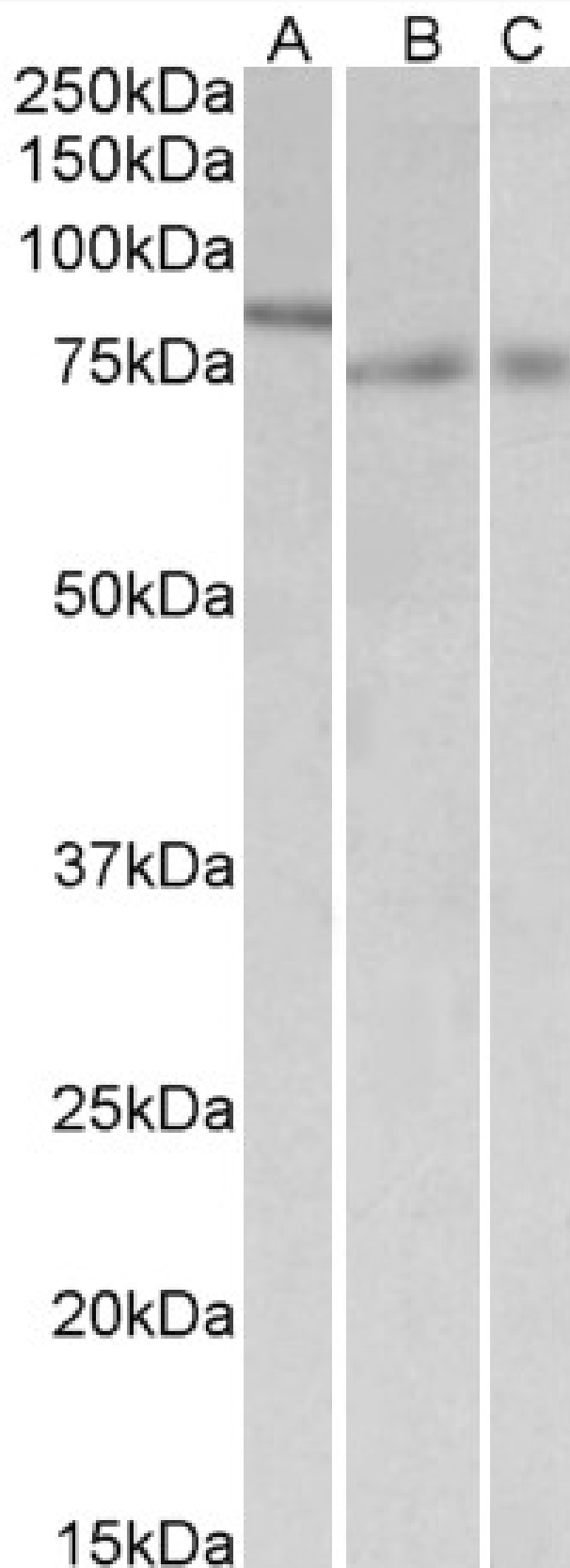


GOAT ANTI-IRF2BP1 (AA461-474) ANTIBODY

SKU: EB10698



SPECIFICATIONS

Formulation	Supplied at 0.5 mg/ml in Tris saline, 0.02% sodium azide, pH7.3 with 0.5% bovine serum albumin.
Unit Size	100 µg
Storage Instructions	Aliquot and store at -20°C. Minimize freezing and thawing.
Synonym / Alias Names	DKFZp434M154 interferon regulatory factor 2 binding protein 1 IRF2BP1
Accession ID	NP_056464.1
Blocking Peptide	EBP10698
Immunogen	Peptide with sequence C-QPPTQHRLVARNGE, from the internal region of the protein sequence according to NP_056464.1.
Peptide Sequence	C-QPPTQHRLVARNGE
Purification Method	Purified from goat serum by ammonium sulphate precipitation followed by antigen affinity chromatography using the immunizing peptide.
Shipping Instructions	Refrigerated
Predicted Species	Human, Mouse, Rat, Dog, Pig, Cow
Reactive Species	Human, Mouse, Rat
Human Gene ID	26145
Product Grade	https://prod-vector-labs-pimcore-assets.s3.us-east-1.amazonaws.com/assets/products/image/elite_medium.png
ELISA Detection Limit	Antibody detection limit dilution 1:16000.
Western Blot	Approx 60kDa band observed in Human Liver lysates (calculated MW of 61.7kDa according to NP_056464.1). An approx 85kDa band observed in nuclear lysates of cell line NIH3T3 and 75kDa in Mouse and Rat Colon lysates. This molecular weight is routinely observed by other sources. Recommended concentration: 0.3-1µg/ml.
Application Type	Pep-ELISA, WB

DOCUMENTS

- [Data Sheet](#)

GALLERY IMAGES

