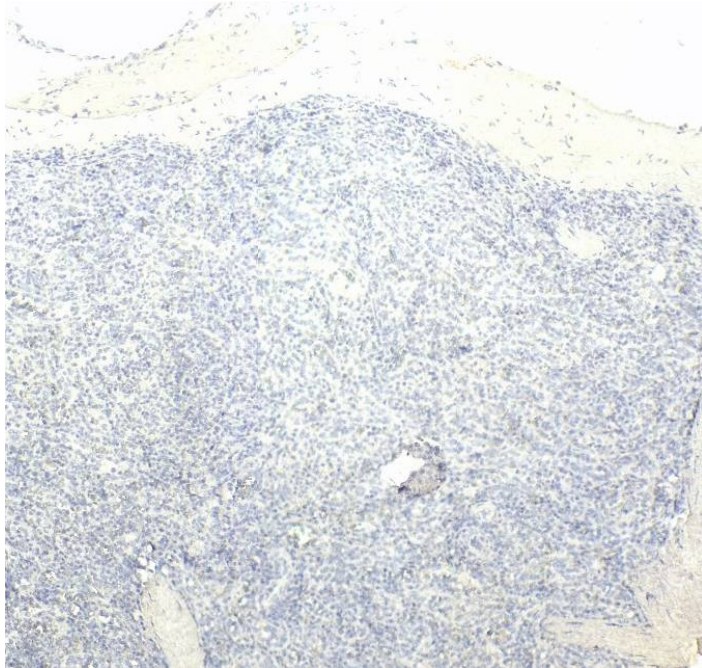




GOAT ANTI-IRF5 ANTIBODY

SKU: EB05585



SPECIFICATIONS

Formulation	Supplied at 0.5 mg/ml in Tris saline, 0.02% sodium azide, pH7.3 with 0.5% bovine serum albumin.
Unit Size	100 µg
Storage Instructions	Aliquot and store at -20°C. Minimize freezing and thawing.
Synonym / Alias	SLEB10 interferon regulatory factor 5 IRF5
Names	
Accession ID	NP_116032.1; NP_001092097.2; NP_001092099.1; ; NP_001229381.1
Blocking Peptide	EBP05585
Immunogen	Peptide with sequence C-QGPWPMHPAGMQ, from the C Terminus of the protein sequence according to NP_116032.1; NP_001092097.2; NP_001092099.1; ; NP_001229381.1.
Product Comments	This antibody is expected to recognize reported isoforms (NP_116032.1; NP_001092097.2 ; NP_001092099.1; ; NP_001229381.1



Peptide Sequence	C-QGPWPMHPAGMQ
Purification Method	Purified from goat serum by ammonium sulphate precipitation followed by antigen affinity chromatography using the immunizing peptide.
Shipping Instructions	Refrigerated
Predicted Species	Human
Reactive Species	Human
Human Gene ID	3663
Product Grade	https://prod-vector-labs-pimcore-assets.s3.us-east-1.amazonaws.com/assets/products/image/elite_medium.png
IHC Results	Paraffin embedded Human Spleen. Recommended concentration: 5µg/ml.
ELISA Detection Limit	Antibody detection limit dilution 1:128000.
Western Blot	Approx. 55+60kDa bands observed in Human Spleen lysates, approx. 65kDa in lysates of cell line A549, and approx. 70kDa in lysates of cell lines Daudi (calculated MW of 57.8kDa according to NP_001092099.1). These molecular weights have been observed by other commercial sources, and were successfully blocked by incubation with the immunizing peptide. Recommended concentration: 1-2µg/ml. Primary incubation 1 hour at room temperature.
Application Type	Pep-ELISA, WB, IHC

DOCUMENTS

- [Data Sheet](#)

GALLERY IMAGES

