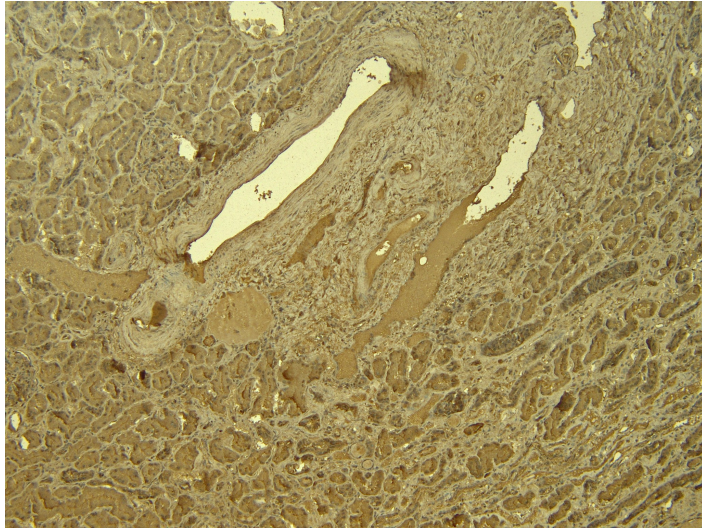




GOAT ANTI-IRF6 ANTIBODY

SKU: EB05404



SPECIFICATIONS

Formulation Supplied at 0.5 mg/ml in Tris saline, 0.02% sodium azide, pH7.3 with 0.5% bovine serum albumin.

Unit Size 100 µg

Storage Instructions Aliquot and store at -20°C. Minimize freezing and thawing.

Synonym /

Alias OFC6|VWS|PPS|PIT|LPS|interferon regulatory factor 6|IRF6

Names

Accession ID NP_006138.1

Blocking Peptide EBP05404

Immunogen Peptide with sequence C-TPSMLPPALPPQ, from the C Terminus of the protein sequence according to NP_006138.1.

Peptide Sequence C-TPSMLPPALPPQ

Purification Method Purified from goat serum by ammonium sulphate precipitation followed by antigen affinity chromatography using the immunizing peptide.

Shipping Instructions Refrigerated



Predicted Species	Human
Reactive Species	Human
Human Gene ID	3664
Mouse Gene ID	54139
Product Grade	https://prod-vector-labs-pimcore-assets.s3.us-east-1.amazonaws.com/assets/products/image/elite_medium.png
IHC Results	Paraffin embedded Human Kidney. Recommended concentration: 5µg/ml.
ELISA	
Detection Limit	Antibody detection limit dilution 1:4000.
Western Blot	Approx 58-60kDa band observed in Human Ovary and approx. 60kDa in Human Kidney lysates (calculated MW of 53.1kDa according to NP_006138.1).The observed molecular weight corresponds to different antibodies from other commercial sources. Recommended concentration: 2-3µg/ml. Primary incubation 1 hour at room temperature.
Application Type	Pep-ELISA, WB, IHC

DOCUMENTS

- [Data Sheet](#)

GALLERY IMAGES

