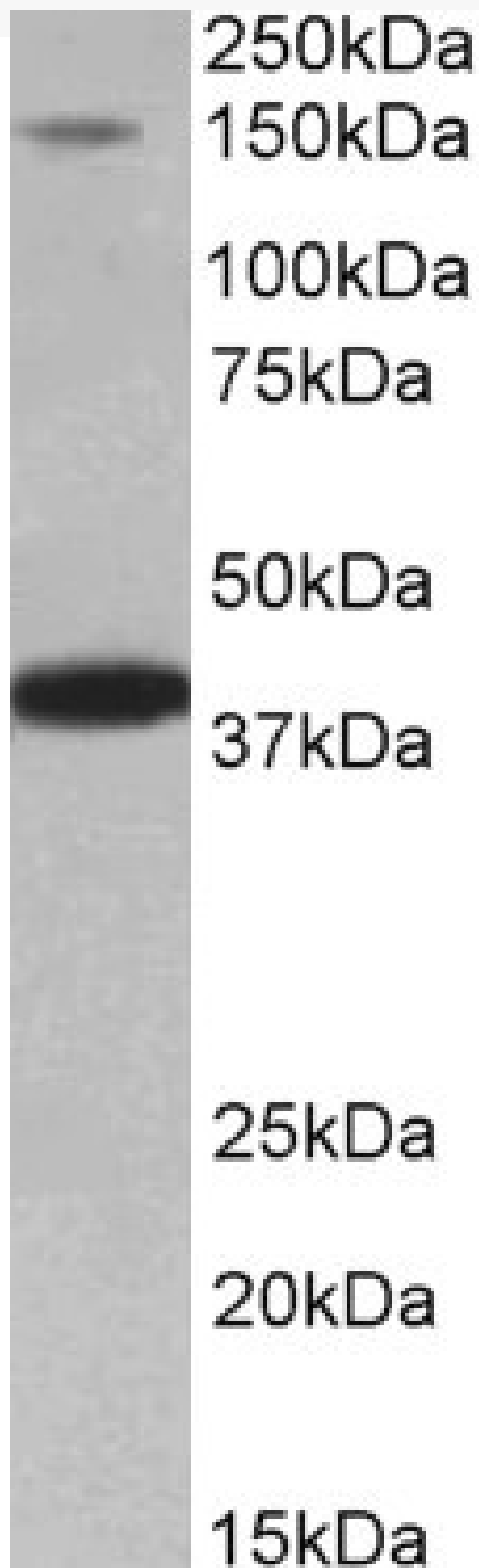


# GOAT ANTI-IRS4 (MOUSE AA633-647) ANTIBODY

**SKU:** EB11828



## SPECIFICATIONS

**Formulation** Supplied at 0.5 mg/ml in Tris saline, 0.02% sodium azide, pH7.3 with 0.5% bovine serum albumin.

**Unit Size** 100 µg

**Storage Instructions** Aliquot and store at -20°C. Minimize freezing and thawing.

**Synonym /**

**Alias** RP23-415G1.3|pp160|phosphoprotein of 160 kDa|IRS-4|Irs4|insulin receptor substrate 4

**Names**

**Usage** <strong>Immunofluorescence:</strong> This product has been successfully used in IF on Mouse: Harriet M Jackson et al, BMC Genomics. 2013 Nov 25;14:831. PMID: 24274089.

**Summary**

**Accession ID** NP\_034702.2

**Blocking Peptide** EBP11828

**Immunogen** Peptide with sequence C-DRGTKERKEAKEVRD, from the internal region of the protein sequence according to NP\_034702.2.

**Peptide Sequence** C-DRGTKERKEAKEVRD

**Purification Method** Purified from goat serum by ammonium sulphate precipitation followed by antigen affinity chromatography using the immunizing peptide.

**Shipping Instructions** Refrigerated

**Predicted Species** Mouse, Rat

**Reactive Species** Mouse

**Mouse Gene ID** 16370

**Rat Gene ID** 315350

**Product Grade** [https://prod-vector-labs-pimcore-assets.s3.us-east-1.amazonaws.com/assets/products/image/elite\\_medium.png](https://prod-vector-labs-pimcore-assets.s3.us-east-1.amazonaws.com/assets/products/image/elite_medium.png)

**ELISA**

**Detection Limit** Antibody detection limit dilution 1:128000.

**Western Blot** Approx 150kDa band observed in Mouse Heart lysates (calculated MW of 130kDa according to NP\_034702.2). The observed molecular weight corresponds to earlier findings in literature with different antibodies (Schreyer et al, JEndocrinology. 2003 Apr;144(4):1211-8. PMID: 12639902). Recommended concentration: 0.2-0.6µg/ml. Primary incubation was 1 hour. An additional band of unknown identity was also consistently observed at ~39kDa. This band was successfully blocked by incubation with the immunizing peptide. This product has been successfully used in WB on Mouse: Ikink GJ et al, Nat Commun. 2016 Nov 23;7:13567. PMID: 27876799.

**Application Type** Pep-ELISA, WB, IF

## SELECTED REFERENCES

[{"pmid": 24274089, "intro": "**This antibody has been successfully used in IF on Mouse:**", "title": "Clustering of transcriptional profiles identifies changes to insulin signaling as an early event in a mouse model of Alzheimer's disease", "author": "Harriet M Jackson, Ileana Soto, Leah C Graham, Gregory W Carter and Gareth R Howel.", "journal": "BMC Genomics. 2013 Nov 25;14:831. "}, {"pmid": 27876799, "intro": "**This antibody has been successfully used in Western blot on Mouse:**", "title": "IRS4 induces mammary tumorigenesis and confers resistance to HER2-targeted therapy through constitutive PI3K/AKT-pathway hyperactivation", "author": "Ikink GJ, Boer M, Bakker ER, Hilkens J", "journal": "Nat Commun. 2016 Nov 23;7:13567"}]

## DOCUMENTS

- [Data Sheet](#)

## GALLERY IMAGES

