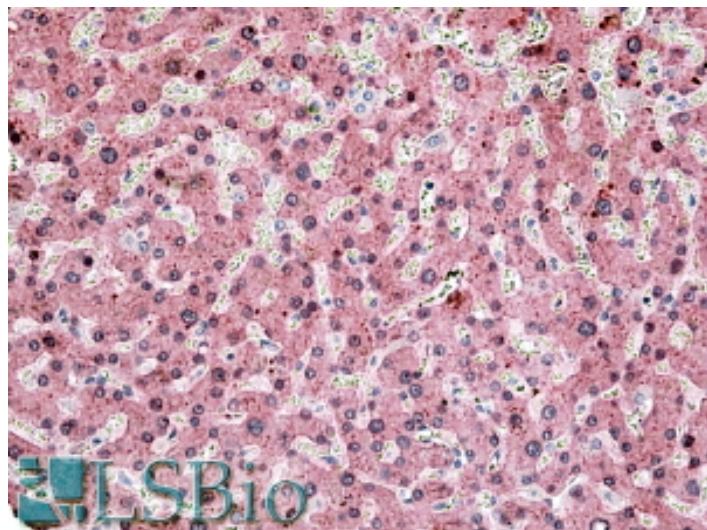


GOAT ANTI-ITIH4 ANTIBODY

SKU: EB09084



SPECIFICATIONS

Formulation Supplied at 0.5 mg/ml in Tris saline, 0.02% sodium azide, pH7.3 with 0.5% bovine serum albumin.

Unit Size 100 µg

Storage Instructions Aliquot and store at -20°C. Minimize freezing and thawing.

Synonym / plasma kallikrein-sensitive glycoprotein|inter-alpha (globulin) inhibitor

Alias Names H4|PK120|ITIHL1|IHRP|H4P|DKFZp686G21125|inter-alpha (globulin) inhibitor H4 (plasma Kallikrein-sensitive glycoprotein)|ITIH4

Accession ID NP_002209.2

Blocking Peptide EBP09084

Immunogen Peptide with sequence ERLCVDPRHRQGPVN, from the internal region of the protein sequence according to NP_002209.2.

Product Comments The immunizing peptide represents a region of the 35kDa chain. This chain is glycosylated giving rise to an apparent higher molecular weight.

Peptide Sequence ERLCVDPRHRQGPVN

Purification Method Purified from goat serum by ammonium sulphate precipitation followed by antigen affinity chromatography using the immunizing peptide.

| | |
|------------------------------|--|
| Shipping Instructions | Refrigerated |
| Predicted Species | Human |
| Reactive Species | Human |
| Human Gene ID | 3700 |
| Product Grade | https://prod-vector-labs-pimcore-assets.s3.us-east-1.amazonaws.com/assets/products/image/elite_medium.png |
| IHC Results | In paraffin embedded Human Liver shows vesicular staining in the cytoplasm of hepatocytes. Recommended concentration, 4-6µg/ml. |
| ELISA | |
| Detection Limit | Antibody detection limit dilution 1:16000. |
| Western Blot | Preliminary experiments gave an approx. 150kDa band in Human Liver and Lung lysates after 0.03µg/ml antibody staining. Please note that currently we cannot find an explanation in the literature for the band we observe given the calculated size of 103kDa according to NP_002209.2. The 150kDa band was successfully blocked by incubation with the immunizing peptide. We would appreciate any feedback from people in the field - have any results been reported with other antibodies/lysates? Have any further splice variants/modified forms been reported? |
| Application Type | Pep-ELISA, IHC |

DOCUMENTS

- [Data Sheet](#)

GALLERY IMAGES

