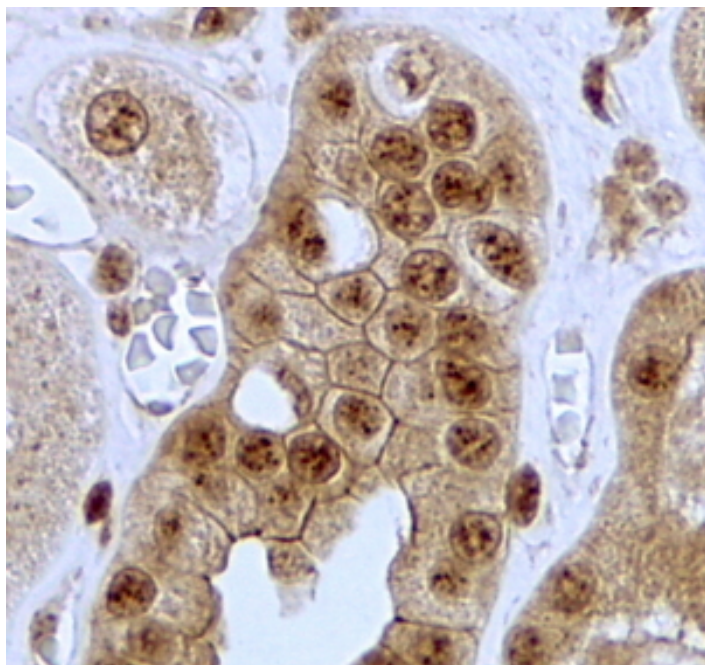


GOAT ANTI-JAG1 ANTIBODY

SKU: EB10959



SPECIFICATIONS

Formulation Supplied at 0.5 mg/ml in Tris saline, 0.02% sodium azide, pH7.3 with 0.5% bovine serum albumin.

Unit Size 100 µg

Storage Instructions Aliquot and store at -20°C. Minimize freezing and thawing.

Synonym /

Alias MGC104644| JAGL1| HJ1| CD339| AWS| AHD| AGS| jagged 1|JAG1

Names

Usage **Immunofluorescence:** Strong expression of the protein seen in the cytoplasm of NIH3T3 cells. Recommended concentration: 5µg/ml.

Summary

Accession ID NP_000205.1

Blocking Peptide EBP10959

Immunogen Peptide with sequence C-TNKQDNRDLESAQS, from the C Terminus of the protein sequence according to NP_000205.1.

Peptide Sequence	C-TNKQDNRDLESAQS
Purification Method	Purified from goat serum by ammonium sulphate precipitation followed by antigen affinity chromatography using the immunizing peptide.
Shipping Instructions	Refrigerated
Predicted Species	Human, Mouse, Rat, Dog, Pig, Cow
Reactive Species	Human, Mouse
Human Gene ID	182
Mouse Gene ID	16449
Rat Gene ID	29146
Product Grade	https://prod-vector-labs-pimcore-assets.s3.us-east-1.amazonaws.com/assets/products/image/elite_medium.png
IHC Results	In paraffin embedded Human Kidney shows membrane staining in the epithelial cells of convoluted tubules. Recommended concentration, 2-4µg/ml.
ELISA	
Detection Limit	Antibody detection limit dilution 1:8000.
Application Type	Pep-ELISA, IF, IHC

DOCUMENTS

- [Data Sheet](#)

GALLERY IMAGES

