



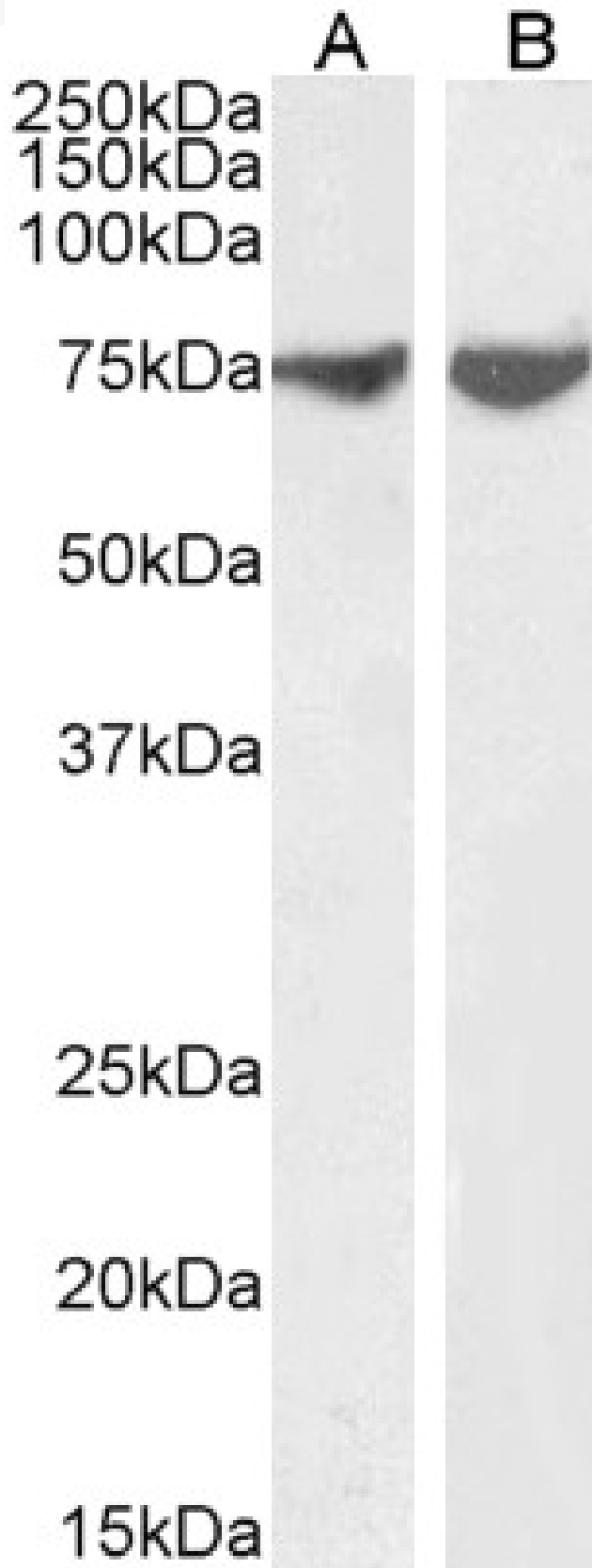
www.everestbiotech.com

Email: customerservice@vectorlabs.com

Telephone: [\(650\) 697-3600](tel:(650)697-3600)

GOAT ANTI-JIP1 / MAPK8IP1 (AA265-279) ANTIBODY

SKU: EB13078





SPECIFICATIONS

Formulation	Supplied at 0.5 mg/ml in Tris saline, 0.02% sodium azide, pH7.3 with 0.5% bovine serum albumin.
Unit Size	100 µg
Storage Instructions	Aliquot and store at -20°C. Minimize freezing and thawing.
Synonym / Alias Names	PRKM8 interacting protein; islet-brain 1 JNK-interacting protein 1 JNK MAP kinase scaffold protein 1 JNK IB-1 C-Jun-amino-terminal kinase-interacting protein 1 PRKM8IP JIP1 JIP-1 IB1 mitogen-activated protein kinase 8 interacting protein 1; MAPK8IP1
Accession ID	NP_005447.1
Blocking Peptide	EBP13078
Immunogen	Peptide with sequence C-DRIHYQADVRLATE, from the internal region of the protein sequence according to NP_005447.1.
Peptide Sequence	C-DRIHYQADVRLATE
Purification Method	Purified from goat serum by ammonium sulphate precipitation followed by antigen affinity chromatography using the immunizing peptide.
Shipping Instructions	Refrigerated
Predicted Species	Human, Mouse, Rat, Dog, Pig
Reactive Species	Human
Human Gene ID	9479
Mouse Gene ID	19099
Rat Gene ID	116457
Product Grade	https://prod-vector-labs-pimcore-assets.s3.us-east-1.amazonaws.com/assets/products/image/elite_medium.png
ELISA Detection Limit	Antibody detection limit dilution 1:32000.
Western Blot	Approx 75kDa band observed in Human Brain (Amygdala and Cerebellum) lysates (calculated MW of 77.5kDa according to NP_005447.1). Recommended concentration: 0.3-1µg/ml. Primary incubation 1 hour at room temperature.
Application Type	Pep-ELISA, WB



DOCUMENTS

- [Data Sheet](#)

GALLERY IMAGES

