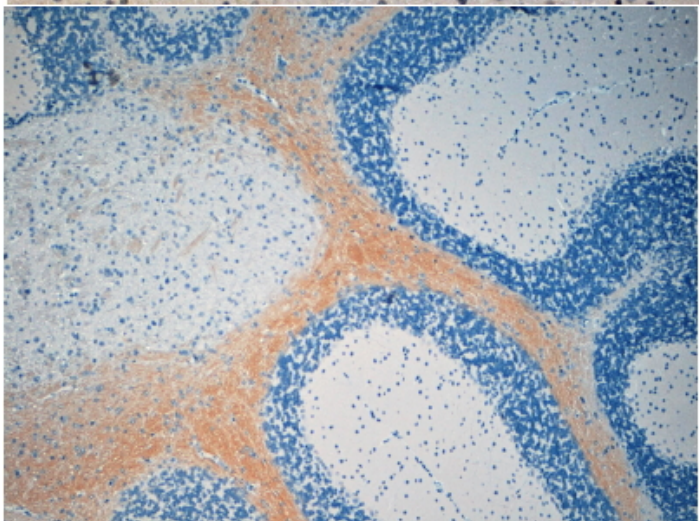
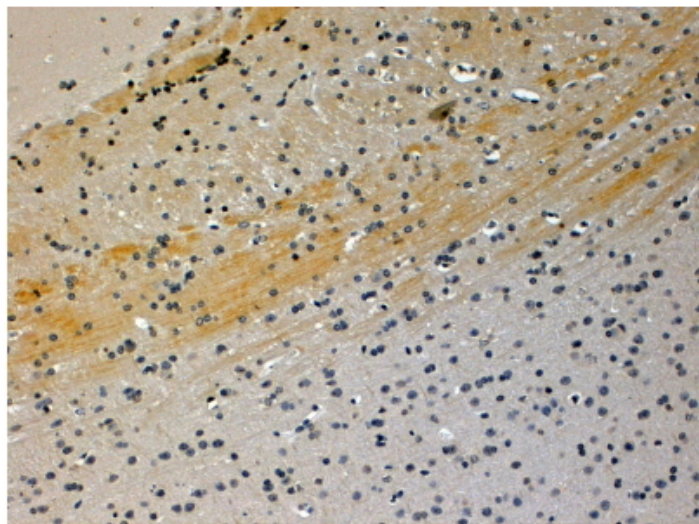


## GOAT ANTI-JIP3 / SYD2 / JSAP1 ANTIBODY

SKU: EB05971



---

## SPECIFICATIONS

**Formulation** Supplied at 0.5 mg/ml in Tris saline, 0.02% sodium azide, pH7.3 with 0.5% bovine serum albumin.

**Unit Size** 100 µg

**Storage** Aliquot and store at -20°C. Minimize freezing and thawing.

**Instructions**

	homolog of Drosophila Sunday driver 2 C-jun-amino-terminal kinase interacting protein
<b>Synonym / Alias Names</b>	3 DKFZp762N1113 AC012180.8 JNK/stress-activated protein kinase-associated protein 1 homolog of Drosophila Sunday driver 2 similar to sperm specific protein JNK/SAPK-associated protein-1 JNK-interacting protein 3 KIAA1066 FLJ00027 JSAP1 SYD2 JIP3 mitogen-activated protein kinase 8 interacting protein 3 MAPK8IP3
<b>Accession ID</b>	NP_055948.2; NP_001035529.1
<b>Blocking Peptide</b>	EBP05971
<b>Immunogen</b>	Peptide with sequence MEIQMDEGGGVV-C, from the N Terminus of the protein sequence according to NP_055948.2; NP_001035529.1.
<b>Product Comments</b>	This antibody is expected to recognise both reported Human isoforms of this protein (as represented by NP_055948.2 and NP_001035529.1).
<b>Peptide Sequence</b>	MEIQMDEGGGVV-C
<b>Purification Method</b>	Purified from goat serum by ammonium sulphate precipitation followed by antigen affinity chromatography using the immunizing peptide.
<b>Shipping Instructions</b>	Refrigerated
<b>Predicted Species</b>	Human, Mouse, Rat, Cow
<b>Reactive Species</b>	Mouse
<b>Human Gene ID</b>	23162
<b>Mouse Gene ID</b>	30957
<b>Product Grade</b>	<a href="https://prod-vector-labs-pimcore-assets.s3.us-east-1.amazonaws.com/assets/products/image/elite_medium.png">https://prod-vector-labs-pimcore-assets.s3.us-east-1.amazonaws.com/assets/products/image/elite_medium.png</a>
<b>IHC Results</b>	In paraffin embedded Mouse Brain shows axonal staining in various regions. Recommended concentration, 4-6µg/ml.
<b>ELISA Detection Limit</b>	Antibody detection limit dilution 1:4000.
<b>Application Type</b>	Pep-ELISA, IHC

## DOCUMENTS

- [Data Sheet](#)

## GALLERY IMAGES

