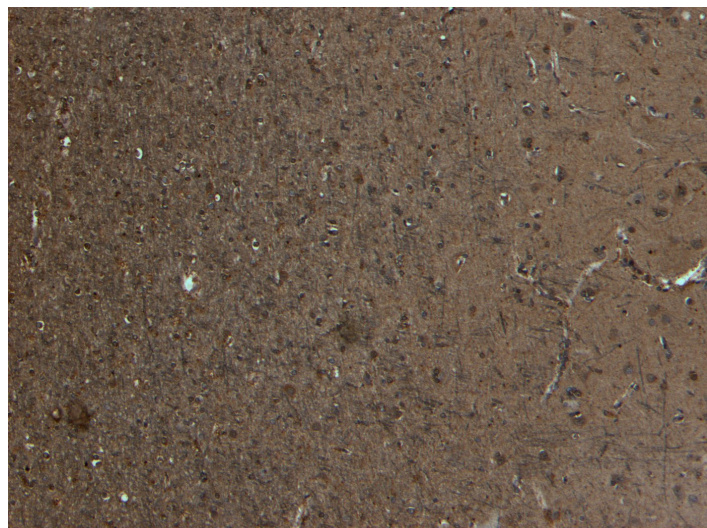


GOAT ANTI-KALIRIN ANTIBODY

SKU: EB06143



SPECIFICATIONS

Formulation	Supplied at 0.5 mg/ml in Tris saline, 0.02% sodium azide, pH7.3 with 0.5% bovine serum albumin.
Unit Size	100 µg
Storage Instructions	Aliquot and store at -20°C. Minimize freezing and thawing.
Synonym / Alias	FLJ18623 FLJ18196 FLJ12332 DUO DUET hCG_2022551 serine/threonine kinase with Dbp- and pleckstrin homology domains huntingtin-associated protein interacting protein (duo) duo TRAD HAPIP FLJ16443 kalirin, RhoGEF
Names	kinase KALRN
Usage Summary	Flow Cytometry: Flow cytometric analysis of HepG2 cells. Recommended concentration: 10ug/ml.
Accession ID	NP_003938.1; NP_001309918.1; NP_001309919.1; NP_001309920.1; NP_001309921.1
Blocking Peptide	EBP06143
Immunogen	Peptide with sequence C-RWHLGPGDPFSTYV, from the C Terminus of the protein sequence according to NP_003938.1; NP_001309918.1; NP_001309919.1; NP_001309920.1; NP_001309921.1.
Product Comments	This antibody is expected to recognise NP_003938.1;(isoform 2),,NP_001309918..1 (isoform 5), NP_001309919.1;(isoform 6), NP_001309920.1 (isoform 7), and NP_001309921.1 (isoform 8).
Peptide Sequence	C-RWHLGPGDPFSTYV
Purification Method	Purified from goat serum by ammonium sulphate precipitation followed by antigen affinity chromatography using the immunizing peptide.

Shipping Instructions	Refrigerated
Predicted Species	Human, Mouse, Rat
Reactive Species	Human
Human Gene ID	8997
Mouse Gene ID	545156
Rat Gene ID	84009
Product Grade	https://prod-vector-labs-pimcore-assets.s3.us-east-1.amazonaws.com/assets/products/image/elite_plus_medium.png
IHC Results	Paraffin embedded Human Brain (Cortex). Recommended concentration: 4-5µg/ml.
ELISA	
Detection Limit	Antibody detection limit dilution 1:16000.
Western Blot	Preliminary testing showed a band at approx.. 200kDa in Rat Brain lysate, after 0.1ug/ml antibody staining (calculated Mwt. of 192.5 kDa according to XP_038944588.1). Primary incubation 1 hour at room temperature.
Application Type	Pep-ELISA, FC, IHC

DOCUMENTS

- [Data Sheet](#)

GALLERY IMAGES

