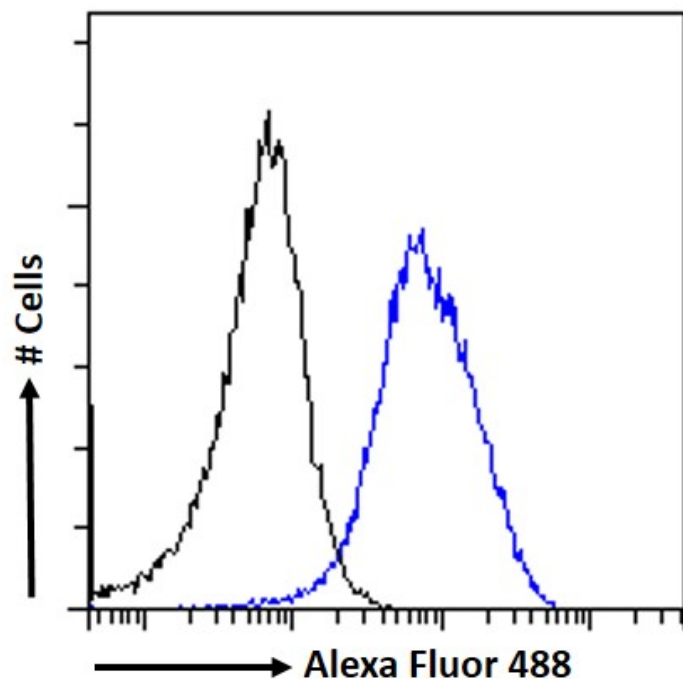


# GOAT ANTI-KALLIKREIN 6 ANTIBODY

SKU: EB12265



## SPECIFICATIONS

<b>Formulation</b>	Supplied at 0.5 mg/ml in Tris saline, 0.02% sodium azide, pH7.3 with 0.5% bovine serum albumin.
<b>Unit Size</b>	100 µg
<b>Storage Instructions</b>	Aliquot and store at -20°C. Minimize freezing and thawing.
<b>Synonym / Alias Names</b>	zyme serine protease 9 serine protease 18 protease M neurosin kallikrein-6 hK6 SP59 PRSS9 PRSS18 Klk7 Bssp kallikrein-related peptidase 6 KLK6
<b>Usage Summary</b>	<p><b>Immunofluorescence:</b> Strong expression of the protein seen in A431 and U2OS cells.</p> <p><b>Flow Cytometry:</b> Flow cytometric analysis of A431 cells. Recommended concentration: 10µg/ml.</p>
<b>Accession ID</b>	NP_002765.1; NP_001012983.1
<b>Blocking Peptide</b>	EBP12265

<b>Immunogen</b>	Peptide with sequence C-KTADGDFPDTIQ, from the internal region of the protein sequence according to NP_002765.1; NP_001012983.1.
<b>Product Comments</b>	This antibody is expected to recognize both reported isoforms (NP_002765.1; NP_001012983.1). Reported variants represent identical protein: NP_002765.1, NP_001012982.1.
<b>Peptide Sequence</b>	C-KTADGDFPDTIQ
<b>Purification Method</b>	Purified from goat serum by ammonium sulphate precipitation followed by antigen affinity chromatography using the immunizing peptide.
<b>Shipping Instructions</b>	Refrigerated
<b>Predicted Species</b>	Human
<b>Reactive Species</b>	Human
<b>Human Gene ID</b>	5653
<b>Product Grade</b>	<a href="https://prod-vector-labs-pimcore-assets.s3.us-east-1.amazonaws.com/assets/products/image/elite_plus_medium.png">https://prod-vector-labs-pimcore-assets.s3.us-east-1.amazonaws.com/assets/products/image/elite_plus_medium.png</a>
<b>IHC Results</b>	Paraffin embedded Human Prostate and Kidney. Recommended concentration: 5µg/ml.
<b>ELISA</b>	
<b>Detection Limit</b>	Antibody detection limit dilution 1:128000.
<b>Application Type</b>	Pep-ELISA, IHC, IF, FC

## DOCUMENTS

- [Data Sheet](#)

## GALLERY IMAGES

