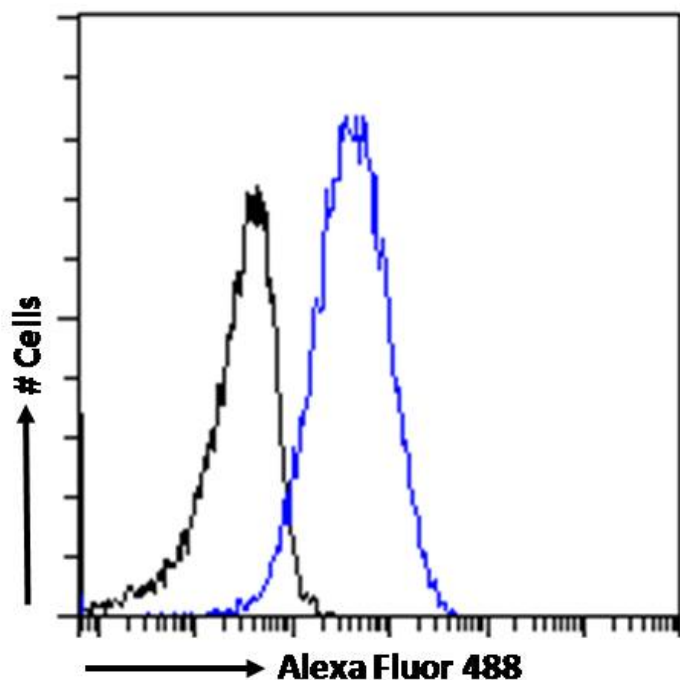


GOAT ANTI-KARYOPHERIN (IMPORTIN) BETA 1 ANTIBODY

SKU: EB07018



SPECIFICATIONS

Formulation Supplied at 0.5 mg/ml in Tris saline, 0.02% sodium azide, pH7.3 with 0.5% bovine serum albumin.

Unit Size 100 µg

Storage Instructions Aliquot and store at -20°C. Minimize freezing and thawing.

Synonym / Alias Names IPO1|KapB1|nuclear factor p97|karyopherin beta 1|importin beta-1 subunit|importin 90|NTF97|MGC2157|MGC2156|MGC2155|Impnb|IPOB|IMB1|KPNB1|HGNC:6400|karyopherin (importin) beta 1

Usage Summary **Immunofluorescence:** Strong expression of the protein seen in U2OS cells. Recommended concentration: 10µg/ml. **Flow Cytometry:** Flow cytometric analysis of A431 cells. Recommended concentration: 10ug/ml.

Accession ID NP_002256.2; NP_001263382.1

Blocking Peptide EBP07018

Immunogen	Peptide with sequence C-RRSKTNKAKTLAT, from the C Terminus of the protein sequence according to NP_002256.2; NP_001263382.1.
Peptide Sequence	C-RRSKTNKAKTLAT
Purification Method	Purified from goat serum by ammonium sulphate precipitation followed by antigen affinity chromatography using the immunizing peptide.
Shipping Instructions	Refrigerated
Predicted Species	Human, Mouse, Rat, Dog, Cow
Reactive Species	Human, Rat
Human Gene ID	3837
Mouse Gene ID	16211
Rat Gene ID	24917
Product Grade	https://prod-vector-labs-pimcore-assets.s3.us-east-1.amazonaws.com/assets/products/image/elite_plus_medium.png
IHC Results	Paraffin embedded Human Spleen. Recommended concentration: 5µg/ml.
ELISA	
Detection Limit	Antibody detection limit dilution 1:32000.
Western Blot	Approx 90-95-kDa band observed in lysates of cell lines A431, Daudi, HEK293, HeLa, Jurkat, Kelly and KNRK (calculated MW of 97.2kDa according to Human NP_002256.2 and Rat NP_058759.2). Recommended concentration: 0.01-0.1µg/ml. Primary incubation 1 hour at room temperature.
Application Type	Pep-ELISA, WB, IHC, IF, FC

DOCUMENTS

- [Data Sheet](#)

GALLERY IMAGES

